

# Reflet

Andrea  
Boschetti

ATELIER  **MIRAGE**<sup>®</sup>





ATELIER  **MIRAGE**

Atelier Mirage serves as the hub of our collaborations with internationally renowned architects and interior designers, representing not just an extension of our catalog, but a true catalyst for innovation in Mirage's commitment to ceramic innovation and stylistic research. Through this project, we highlight our ongoing dedication to innovating and redefining ceramic surfaces within contemporary architecture, showcasing the potential of new forms and functions that Italian ceramics can offer to enrich modern architectural spaces.

Atelier Mirage si configura come il fulcro delle nostre collaborazioni con architetti e designer d'interni di fama internazionale, rappresentando non meramente una estensione del nostro catalogo, ma un vero e proprio catalizzatore di rinnovamento per l'impegno di Mirage nell'innovazione e nella ricerca stilistica della ceramica. Con questo progetto, mettiamo in evidenza il nostro impegno continuo nell'innovazione e nella ridefinizione delle superfici ceramiche nell'ambito dell'architettura contemporanea, dimostrando il potenziale di nuove forme e funzioni che la ceramica italiana può offrire per arricchire gli spazi architettonici contemporanei.

# Reflet

## Andrea Boschetti

ATELIER  **MIRAGE**

# Inspiring better living

Right from the beginning, we've devoted our efforts to exploring and promoting porcelain stoneware, a material that teams beauty with versatility. We are deeply bound to the Italian ceramic tradition, and have invested pride and passion in carrying forward this heritage in over 150 countries worldwide. As ambassadors of Italian craftsmanship, our commitment to providing sustainable solutions for the well-being of the community and the environment is a model of excellence. **We are Mirage, the company where each ceramic surface has a story to tell, bursting with beauty and passion.**

Fin dai nostri esordi, ci siamo immersi con dedizione nell'esplorazione e valorizzazione del gres porcellanato, un materiale che unisce la bellezza estetica alla versatilità. Profondamente legati alla tradizione ceramica Made in Italy, è con orgoglio e passione che abbiamo portato avanti quest'eredità in oltre 150 Paesi nel Mondo. Come ambasciatori del Made in Italy, il nostro impegno nella realizzazione di soluzioni sostenibili per il benessere della comunità e dell'ambiente rappresenta un paradigma di eccellenza. **Siamo Mirage, l'azienda in cui la ceramica si trasforma in narrazione e dove ogni superficie racconta una storia ricca di passione e bellezza.**

# Aesthetics meets functionality, light dances with shadow and harmony materialises in every detail.

L'estetica incontra la funzionalità, la **luce** danza con l'ombra e l'**armonia** si materializza in ogni dettaglio.

In the Reflet collection, the light itself becomes a tribute to beauty, serving as a remarkable testament to the power of harmonious design. Each element acts like a mirror, not only reflecting light but also capturing and reinterpreting the dynamic essence of the surrounding environment.

Nella collezione Reflet, è la luce stessa a divenire omaggio alla bellezza, un'audace testimonianza del potere dell'armonia nel design. Ogni pezzo agisce come uno specchio, non solo riflettendo la luce, ma catturando e reinterpretando le dinamiche dello spazio circostante.



“Deciding to create a surface that reflects something, first of all, means designing projects that can establish relationships with nature and its surroundings.”

“Decidere di progettare una superficie che riflette significa innanzitutto sviluppare progetti capaci di stabilire relazioni con la natura e con il contesto circostante.”

## Andrea Boschetti

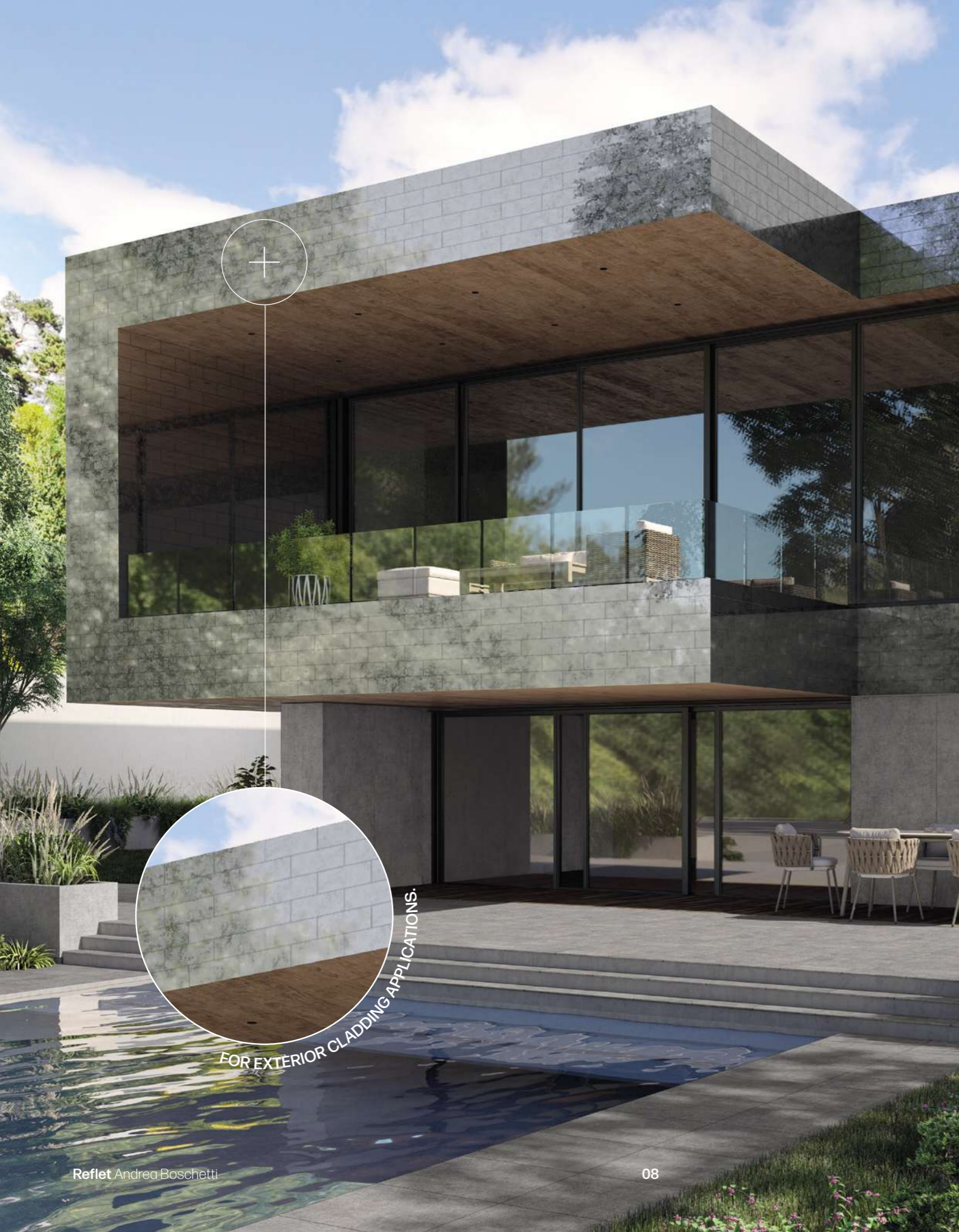
Architect and Ph.D. in urban design, he founded the architecture and urban planning firm Metrogramma in 1999, headquartered in Milan, of which he is currently the CEO and Artistic Director.

Since the beginning of its activity, Metrogramma has participated in and won several international competitions, “without giving up its sharp and provocative operability against a profession often considered too commercial and not oriented towards the real needs of the human habitat.”

Many of his projects have stood out for their innovation and experimentation, spanning all possible scales.

Architetto e dottore in ricerca di progettazione urbana presso l'Istituto d'Architettura di Venezia (IUAV), fonda nel 1999 lo studio di architettura ed urbanistica Metrogramma, con sede a Milano, di cui oggi è CEO e Direttore Artistico. Fin dall'inizio della sua attività Metrogramma ha partecipato e si è aggiudicato diverse competizioni internazionali, “senza rinunciare all'operabilità pungente e provocatoria contro una professione spesso considerata troppo commerciale e non orientata verso le reali esigenze dell'habitat umano”. Molti suoi progetti si sono distinti per innovazione e sperimentazione, spaziando in tutte le possibili scale.





# An artistic tool for creating aesthetic solutions that blend perfectly with the surrounding landscape.

Un autentico strumento creativo per **soluzioni estetiche** che si integrano perfettamente nel paesaggio circostante.

FOR EXTERIOR CLADDING APPLICATIONS.

Conceived to be highly versatile, Reflet showcases the remarkable technical performance and superior resilience against the elements, making it equally suitable for exterior cladding applications.

Concepita per essere estremamente versatile, Reflet vanta performance tecniche di assoluta eccellenza e una notevole resistenza agli agenti atmosferici, rendendola ideale anche come rivestimento esterno di edifici.

# A design approach that goes beyond the concept of shape and function.

Un linguaggio progettuale che va oltre il semplice concetto di **forma** e **funzione**.

Antique finish



Sketch finish



Reflet Andrea Boschetti

10

Available in the 200×600 mm size and three precious colour variants, Reflet consists of two surface options: Antique, with an antiqued mirror effect, and Sketch, with a matte finish embellished by radiant touches and accents.

Disponibile nel formato 200×600 mm e declinata in 3 preziose varianti cromatiche, Reflet si compone di due superfici: Antique, a effetto specchiante anticato, e Sketch, a effetto opaco con finiture e accenti luminosi.

11

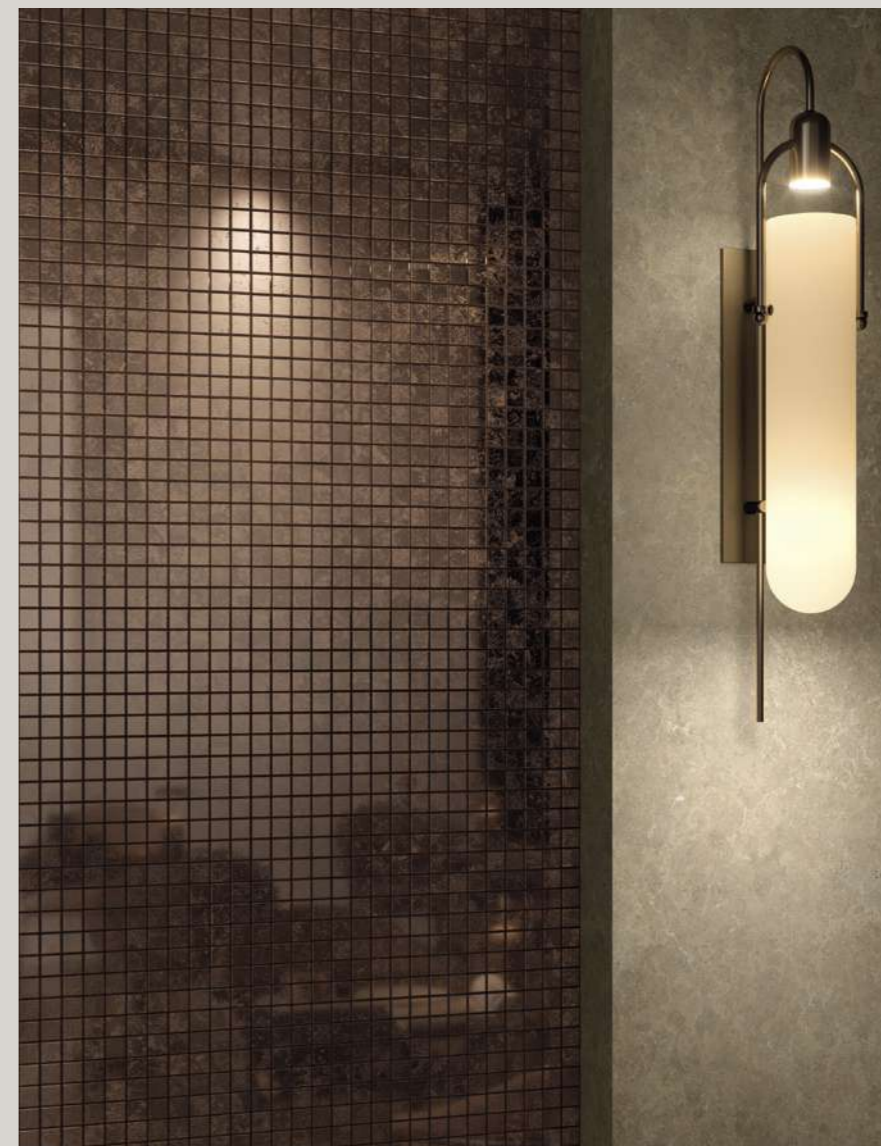
# The timeless beauty of mosaic transform your spaces, one piece a time.

La bellezza senza tempo del **mosaico** trasforma i vostri spazi, un tassello alla volta.

Turn your walls into works of art with Reflet's mosaic decor. The square tiles are available in a wide range of colors, both in the Antique finish, which has a mirror-like effect that captures light and amplifies the perception of space, and in the Sketch finish, which creates a dynamic play of contrasts.

Trasforma le pareti in opere d'arte con il decoro mosaico di Reflet. I tasselli quadrati sono disponibili in un'ampia gamma di colori, sia nella finitura Antique, dall'effetto specchiante che cattura la luce e amplifica la percezione dello spazio, sia nella finitura Sketch, che crea un gioco dinamico di contrasti.





# Striking effects of light and depth.

Effetti suggestivi di luce e profondità.

Reflét is the new porcelain stoneware collection designed by Andrea Boschetti for Mirage that adds value and prestige to modern settings. Its reflective and technically innovative surface not only transforms spaces but also adds striking effects of light and depth. The project offers a unique aesthetic journey, presenting a distinctive and highly personalised approach to elevate any environment.

Reflét è la nuova collezione in gres porcellanato, progettata da Andrea Boschetti per Mirage, che conferisce valore e prestigio agli ambienti contemporanei. Una superficie riflettente e tecnicamente innovativa che trasforma gli spazi, creando effetti suggestivi di luce e profondità. Il progetto offre un'esperienza estetica unica, fornendo una soluzione distintiva e di alta personalità per valorizzare gli ambienti.

# Spaces

# Antique

finish





< CONFERENCE  
HALL



< EXPO



ARS  
Mousiké

wall and desk **Aurore RF 03 Antique** 200x600\_8"x24" | **NYUMA Portland NY 02 NAT SQ** 1200x2780\_48"x110"  
floor **NYUMA Portland NY 02 NAT SQ** 1200x1200\_48"x48"

# Aurore



wall **Aurore\_RF 03\_Antique** 200x600\_8"x24" | **WANDERLUST\_Saint Laurent\_WA 07 LUC SQ** 1200x2780\_48"x110"  
floor **WANDERLUST\_Saint Laurent\_WA 07 LUC SQ** 1200x2780\_48"x110"  
vanity top **WANDERLUST\_Calacatta Copper\_WA 01 LUC**





wall **Aurore\_RF 03\_Mosaico Antique** 300x300\_12"x12" | **ELYSIAN\_Desert Stone\_EY 02 SP SQ** 1200x2780\_48"x110"  
floor **KAO\_Charamel\_KA 03 SP SQ** 200x1200\_8"x48"

# Soirée

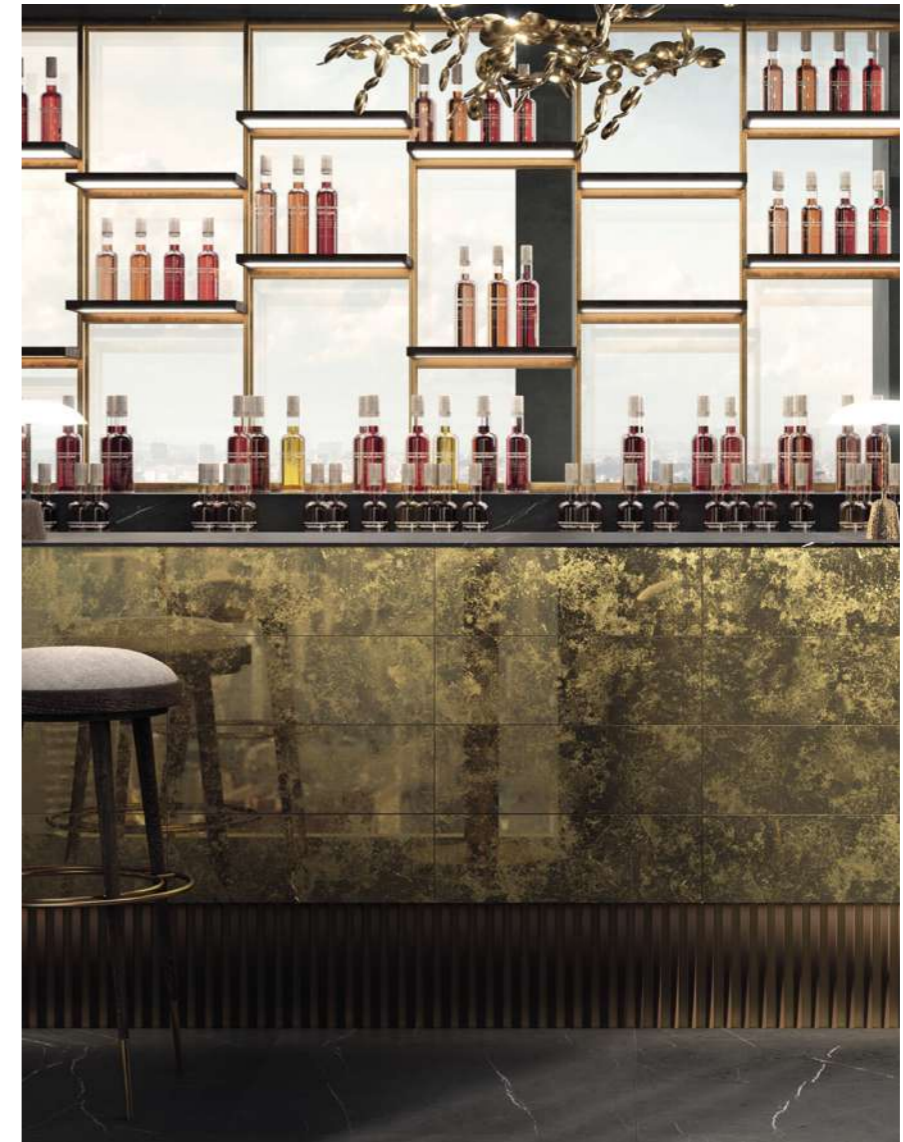


wall **Soirée\_RF 01\_Antique** 200x600\_8"x24" | **NYUMA\_Shotcrete\_NY 06 NAT SQ** 600x1200 / 24"x48"  
floor **NYUMA\_Shotcrete\_NY 06 NAT SQ** 1200x1200 / 48"x48"





# Midi



counter **Midi\_RF 02\_Antique** 200x600\_8"x24"

floor **JOLIE\_Pietra Grey\_JL 06 SP SQ** 800x800 / 31½"x31½"



wall **Midi\_RF02\_Mosaico Antique** 300x300\_12"x12"  
floor **JOLIE\_Calacatta Select JL 02 SP SQ** 1200x1200\_48"x48"

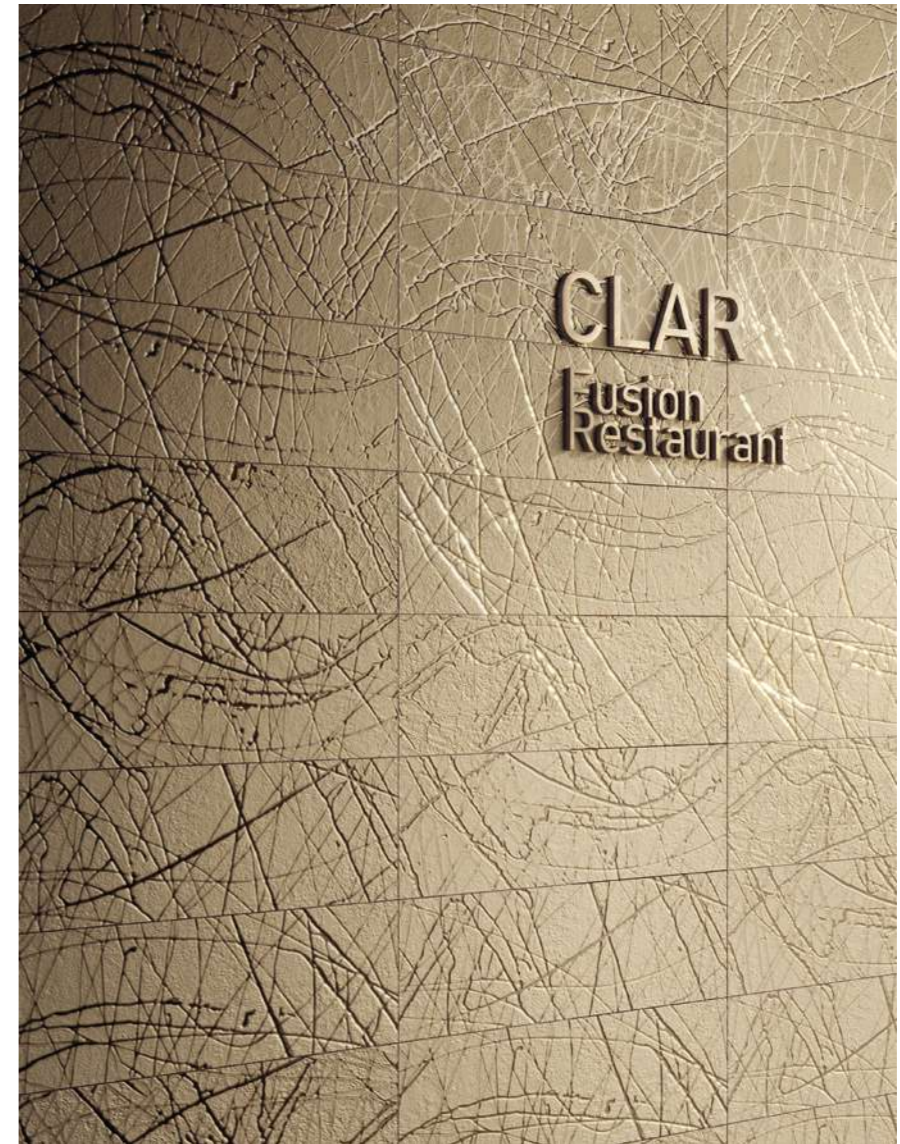
Reflet Andrea Boschetti

# Sketch

finish



# Midi



outdoor wall **Midi\_RF 02\_Sketch** 200x600\_8"x24"

indoor wall **OUDH\_Laos\_OU 05 SP SQ** 1200x2780\_48"x110"

floor **VICEVERSA\_Vaio\_VV 05 SP SQ** 1200x1200\_48"x48"

# Soirée



wall **Soirée\_RF 01\_Sketch** 200x600\_8"x24" | **JOLIE\_Pietra Grey\_JL 06 SP SQ** 1200x2780\_48"x110"  
floor **JOLIE\_Pietra Grey\_JL 06 SP SQ** 800x800 / 31½"x31½"





FREHLEY

wall Soirée\_RF 01\_Mosaico Sketch 300x300\_12"x12" | GLOBAL\_Absolute\_GC 06 SP SQ 600x1200\_24"x48"  
floor NYUMA\_Torching\_NY 03 NAT SQ 1200x1200\_48"x48"



# Aurore



wall **Aurore\_RF 03\_Sketch** 200x600\_8"x24"

floor **MOTLEY\_Liverpool\_MT 06 NAT SQ** 1200x1200\_48"x48"

# Range

# Specs

# Product range

## Gamma prodotti

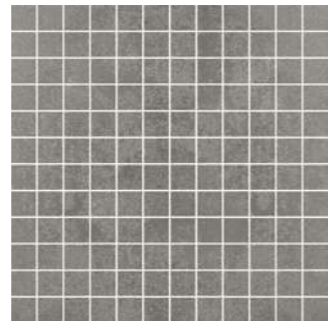
thickness ▶ 9 mm ◀

Product suitable for wall coverings only.  
Prodotto adatto esclusivamente per l'applicazione a rivestimento.

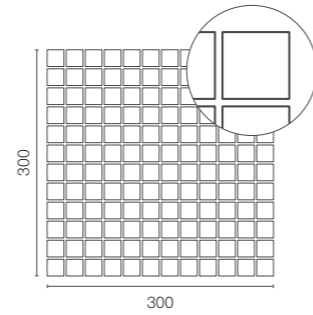
### Antique Finish



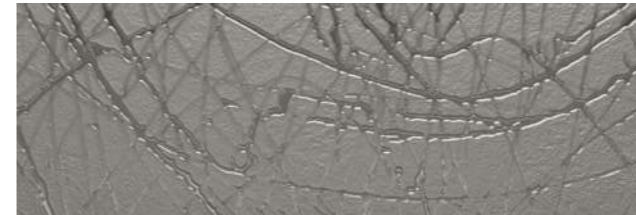
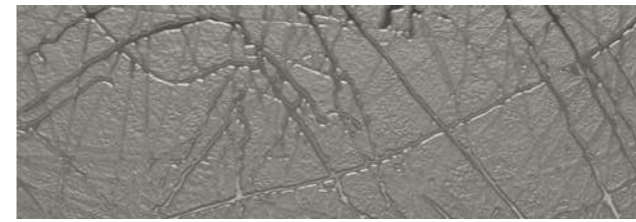
RF 01 SOIRÉE\_200x600\_8"x24"



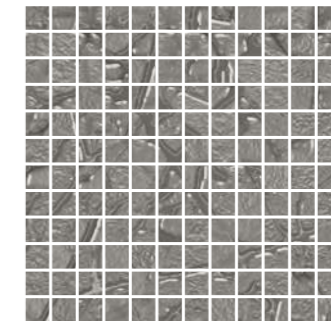
RF 01 mosaico SOIRÉE\_300x300\_12"x12"



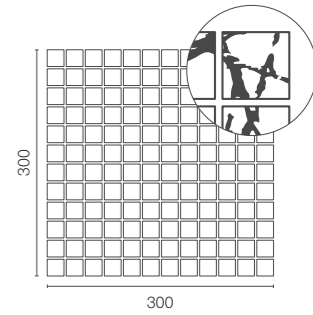
### Sketch Finish



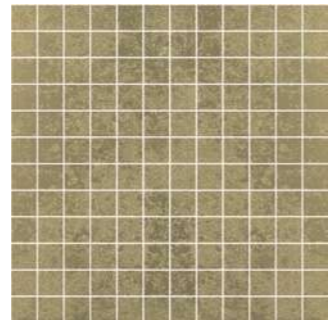
RF 01 SOIRÉE\_200x600\_8"x24"



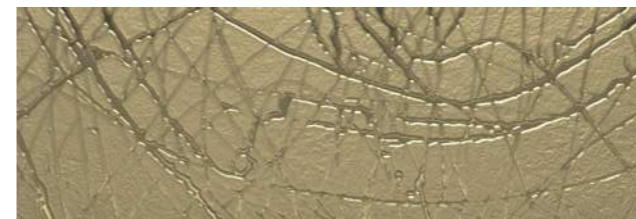
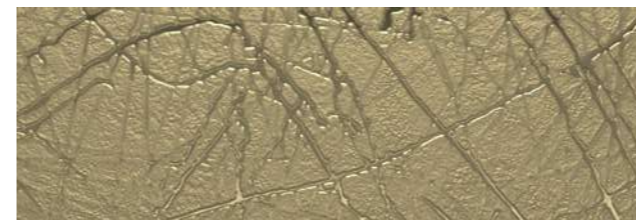
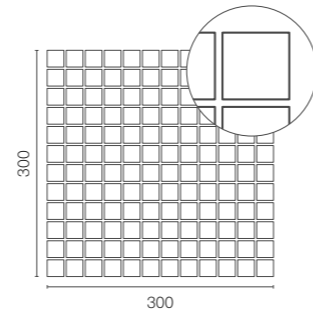
RF 01 mosaico SOIRÉE\_300x300\_12"x12"



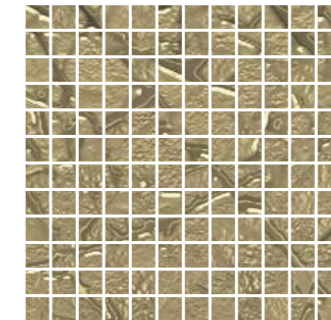
RF 02 MIDI\_200x600\_8"x24"



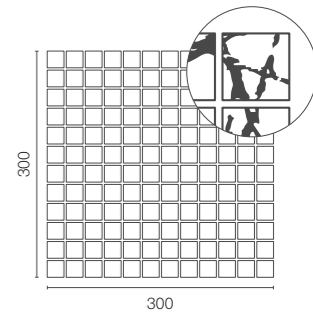
RF 02 mosaico MIDI\_300x300\_12"x12"



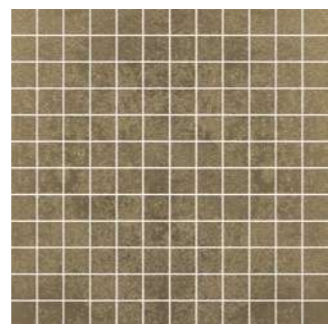
RF 02 MIDI\_200x600\_8"x24"



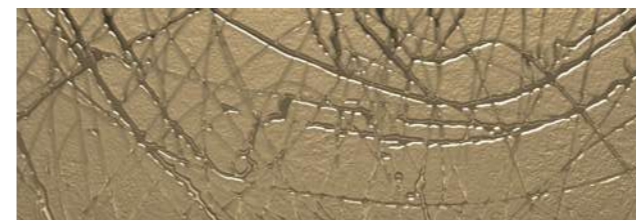
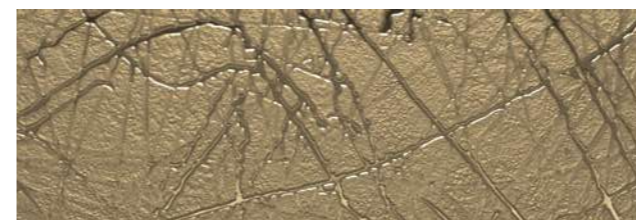
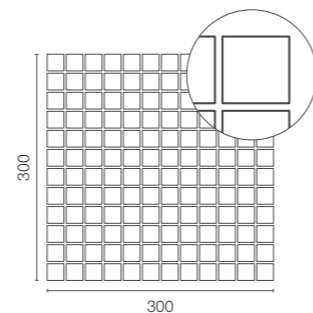
RF 02 mosaico MIDI\_300x300\_12"x12"



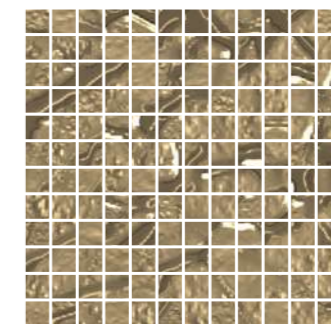
RF 03 AURORE\_200x600\_8"x24"



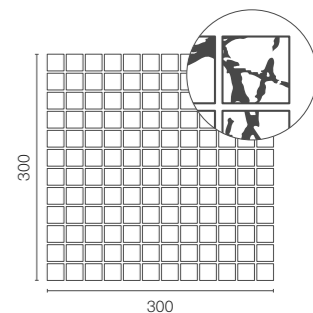
RF 03 mosaico AURORE\_300x300\_12"x12"



RF 03 AURORE\_200x600\_8"x24"



RF 03 mosaico AURORE\_300x300\_12"x12"

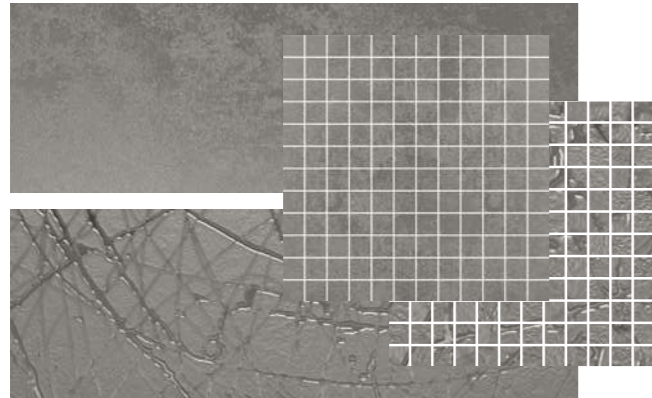


# Reflet matching ideas

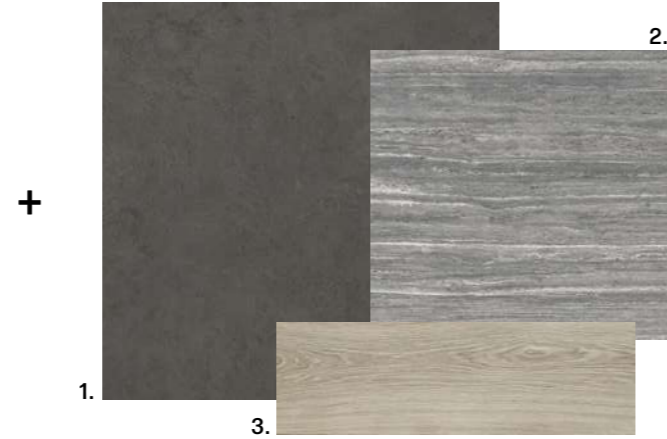
Abbinamenti suggeriti

## RF/RT 01 Soirée

**Antique** Finish



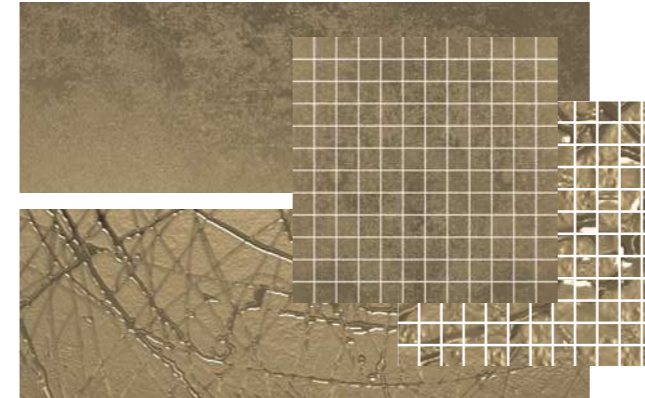
**Sketch** Finish



1. Vaio VV 05\_VICEVERSA collection
2. Travertino Dark EY 08\_ELYSIAN TRAVERTINI collection
3. Elem OU 02\_OUDH collection

## RF/RT 03 Aurore

**Antique** Finish



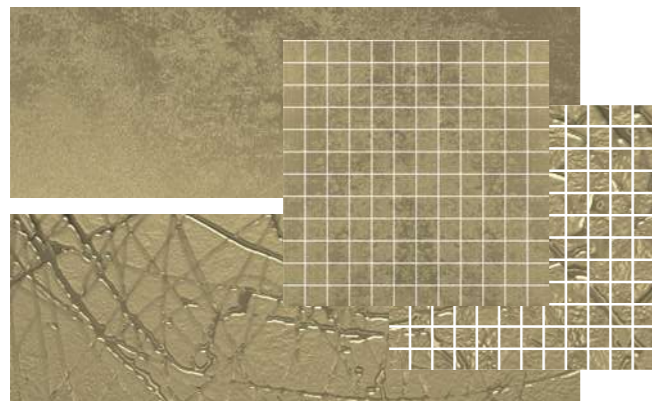
**Sketch** Finish



1. Calacatta Select JL 02\_JOLIE collection
2. Travertino Light Cross EY 13\_ELYSIAN TRAVERTINI collection
3. Master JP 03\_JURUPA collection

## RF/RT 02 Midi

**Antique** Finish



**Sketch** Finish



1. Desert Stone EY 02\_ELYSIAN collection
2. Corten GC 21\_GLOCAL collection
3. Cedro OU 07\_OUDH collection





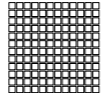
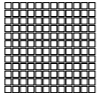

# Recommended grouts

Stucchi consigliati

	LATICRETE	MAPEI	KERAKOLL
RF 01 Soirée	34 Sand Stone	113 Grigio Cemento	Fugabella Color 09
RF 02 Midi	40 Latte	133 Sabbia	Fugabella Color 26
RF 03 Aurore	30 Sand Beige	136 Fango	Fugabella Color 26

## Summary of sizes and packaging



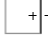
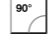

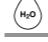









Riassuntivo formati e imballi

	 Antique 200x600_8"x24"	 Sketch 200x600_8"x24"	 Mosaico Antique 300x300_12"x12"	 Mosaico Sketch 300x300_12"x12"
RF 01 Soirée	BGA6	BGJ6	BTG0	BTG3
RF 02 Midi	BGJ4	BGJ7	BTG1	BTG4
RF 03 Aurore	BGJ5	BGJ8	BTG2	BTG5
 pz/scatola pcs/box	4	4	6	6

Discover more



# Standard EN 14411 - G

	CARATTERISTICHE TECNICHE TECHNICAL DATA TECHNISCHE DATEN CARACTERISTIQUES TECHNIQUES CARACTERÍSTICAS TÉCNICAS ТЕХНИЧЕСКИЕ ХАРАКТЕРИСТИКИ 技術特征	NORMA STANDARD NORM NORME NORMA НОРМА 標準	VALORI PRESCRITTI DALLE NORME EN 14411 - G INTERNATIONAL STANDARDS EN 14411 - G INTERNATIONALE NORMWERTE EN 14411 - G VALEURS PREVUES PAR LES NORMES EN 14411 - G VALORES PREVISTOS POR LAS NORMAS EN 14411 - G ПРЕДУСМОТРЕННЫЕ СТАНДАРТОМ EN 14411 - G EN 14411 - G标准规定值	VALORE MEDIO MIRAGE MIRAGE AVERAGE VALUE MIRAGE MITTELWERT VALEURS MOYEN MIRAGE VALOR MEDIO MIRAGE СРЕДНЕЕ ЗНАЧЕНИЕ MIRAGE MIRAGE平均值
	<b>CARATTERISTICHE DIMENSIONALI</b> SIZE CHARACTERISTICS - MASSEIGENSCHAFTEN DETERMINATION DES CARACTERISTIQUES DIMENSIONNELLES - CARACTERÍSTICAS DIMENSIONALES РАЗМЕРНЫЕ ХАРАКТЕРИСТИКИ - 尺寸特征			<b>ANTIQUE</b>   <b>SKETCH</b>
	<b>LATI</b> SIDES - SEITEN COTES - CANTOS РАЗМЕРЫ СТОРОН - 側邊	<b>EN ISO 10545-2</b>	± 0.3% MAX (± 1.0 mm MAX)	<b>CONFORME</b> COMPLYING
	<b>SPESSORE</b> THICKNESS - DICKE ÉPAISSEUR - ESPESOR ТОЛЩИНА - 厚度	<b>EN ISO 10545-2</b>	± 5.0% MAX (± 0.5 mm MAX)	<b>CONFORME</b> COMPLYING
	<b>RETTILINEITÀ DEGLI SPIGOLI</b> STRAIGHTNESS OF SIDES - GERADLINIGKEIT DER KANTEN RECTITUDE DES ARÊTES - RECTITUD DE LOS CANTOS КОСОУГОЛЬНОСТЬ - 边角平直度	<b>EN ISO 10545-2</b>	± 0.3% MAX (± 0.8 mm MAX)	<b>CONFORME</b> COMPLYING
	<b>ORTOGONALITÀ</b> RECTANGULARITY - RECHTWINKLIGKEIT PERPENDICULARITÉ - ORTOGONALIDAD КРИВИЗНА СТОРОН - 直角度	<b>EN ISO 10545-2</b>	± 0.3% MAX (± 1.5 mm MAX)	<b>CONFORME</b> COMPLYING
	<b>PLANARITÀ</b> SURFACE FLATNESS - EBENFLÄCHIGKEIT PLANEITE DE SURFACE - PLANEIDAD КРИВИЗНА ЛИЦЕВОЙ ПОВЕРХНОСТИ - 平整度	<b>EN ISO 10545-2</b>	± 0.4% MAX (± 1.8 mm MAX)	<b>CONFORME</b> COMPLYING
	<b>ASSORBIMENTO D'ACQUA</b> WATER ABSORPTION - WASSERAUFNAHME ABSORPTION D'EAU - ABSORCIÓN DE AGUA ВОДОПОГЛОЩЕНИЕ - 吸水率	<b>EN ISO 10545-3</b>	≤ 0.5%	≤ 0.1%
	<b>RESISTENZA ALLA FLESSIONE</b> FLEXION RESISTANCE - BIEGEFESTIGKEIT RESISTENCIA A LA FLEXION - RESISTENCIA A LA FLEXIÓN ПРЕДЕЛ ПРОЧНОСТИ ПРИ ИЗГИБЕ - 抗弯强度	<b>EN ISO 10545-4</b>	S ≥ 700 N (< 7.5 mm) S ≥ 1300 N (> 7.5 mm) R ≥ 0.35 N/mm <sup>2</sup>	S ≥ 2400N R ≥ 48 N/mm <sup>2</sup>
	<b>RESISTENZA ALL'URTO</b> IMPACT RESISTANCE - STOSSFESTIGKEIT RESISTANCE AUX CHOCES - RESISTENCIA A LOS GOLPES УДАРОСТОЙКОСТЬ - 抗冲击强度	<b>EN ISO 10545-5</b>	VALORE DICHIARATO DECLARED VALUE	> 0.80
	<b>RESISTENZA ALL'ABRASIONE SUPERFICIALE</b> SURFACE ABRASION RESISTANCE - ABRIEFESTIGKEIT DER OBERFLÄCHE RESISTANCE À L'ABRASION SUPERFICIELLE - RESISTENCIA A LA ABRASIÓN SUPERFICIAL ХИМИЧЕСКАЯ СТОЙКОСТЬ - 耐表面磨损	<b>EN ISO 10545-7</b>	≤ 175 mm <sup>3</sup>	PEI 2
	<b>COEFFICIENTE DI DILATAZIONE TERMICA LINEARE</b> COEFFICIENT OF LINEAR THERMAL EXPANSION - LINEARER WÄRMEAUSSDEHNUNGSKOEFFIZIENT COEFFICIENT DE DILATATION THERMIQUE LINEAIRE - COEFFICIENTE DE DILATACIÓN TÉRMICA LINEAL КОЭФФИЦИЕНТ ЛИНЕЙНОГО ТЕРМИЧЕСКОГО РАСШИРЕНИЯ - 线性热膨胀系数	<b>EN ISO 10545-8</b>	-	α = 6.6 x 10 <sup>-6</sup> °C <sup>-1</sup>
	<b>RESISTENZA AGLI SBALZI TERMICI</b> RESISTANCE TO THERMAL SHOCKS - BESTÄNDIGKEIT GEGEN TEMPERATURSCHWANKUNGEN RESISTANCE AUX CHOCES THERMIQUES - RESISTENCIA A LOS CHOQUES TÉRMICOS СТОЙКОСТЬ К ПЕРЕПАДАМ ТЕМПЕРАТУРЫ - 耐热突变性	<b>EN ISO 10545-9</b>	TEST SUPERATO SECONDO EN ISO 10545-1 PASS ACCORDING EN ISO 10545-1	<b>NESSUN DANNO</b> NO DAMAGE
	<b>RESISTENZA AL GELO</b> FROST RESISTANCE - FROSTBESTÄNDIGKEIT RESISTANCE AU GEL - RESISTENCIA AL HIELO МОРОЗОСТОЙКОСТЬ - 耐冻性	<b>EN ISO 10545-12</b>	TEST SUPERATO SECONDO EN ISO 10545-1 PASS ACCORDING EN ISO 10545-1	<b>NESSUN DANNO</b> NO DAMAGE
	<b>RESISTENZA ALL'ATTACCO CHIMICO</b> RESISTANCE TO CHEMICALS - CHEMIKALIENBESTÄNDIGKEIT RESISTANCE A L'ATTAQUE CHIMIQUE - RESISTENCIA QUÍMICA ХИМИЧЕСКАЯ СТОЙКОСТЬ - 耐化学品作用	<b>EN ISO 10545-13</b>	UB MIN.	A
	<b>RESISTENZA ALLE MACCHIE</b> RESISTANCE TO STAINS - FLECKENBESTÄNDIGKEIT RESISTANCE AUX TACHES - RESISTENCIA A LAS MANCHAS УСТОЙЧИВОСТЬ К ПЯТНООБРАЗОВАНИЮ - 防污性	<b>EN ISO 10545-14</b>	VALORE DICHIARATO DECLARED VALUE	5
	<b>CESSIONE DI PIOMBO E CADMIO</b> LEAD AND CADMIUM DISCHARGE - ABGABE VON BLEI UND CADMIUM PERTE DE PLOMB ET CADMIUM - CESIÓN DE PLOMO Y CADMIO ВЫДЕЛЕНИЕ СВИНЦА И КАДМИЯ - 铅和镉的排放	<b>EN ISO 10545-15</b>	VALORE DICHIARATO DECLARED VALUE	<b>&lt; AL LIMITE DI RILEVAMENTO</b> < THAN INSTRUMENT LIMIT

Per i certificati specifici, contattare Mirage SpA - For specific certificates, please contact Mirage SpA - Für die speziellen Zertifikate wenden Sie sich bitte an Mirage SpA - Pour les certificats spécifiques, veuillez contacter Mirage SpA - Para los certificados específicos, contactar Mirage SpA - Для сертификатов обращайтесь в компанию Mirage SpA - 关于具体的证书, 请联系 Mirage SpA 公司

ATELIER  **MIRAGE**<sup>®</sup>

Mirage Granito Ceramico SpA - Settembre 2024

Reproduction of this printed catalogue, even partially, is prohibited.  
È vietata la riproduzione, anche parziale, dell'opera in tutte le sue forme.

**MIRAGE**<sup>®</sup>  
INSPIRING BETTER LIVING

Mirage Granito Ceramico S.p.a.

Uffici e Stabilimento  
41026 - Pavullo (MO) ITALY  
Via Giardini Nord, 225  
Tel. +39 0536 29611  
[www.mirage.it](http://www.mirage.it)



Ceramics of Italy