



colore

appiani

BASIC

diva
06

seta
08

anthologhia
10

anthologhia as
12

anthologhia pezzi speciali
15

open space
16

oro, platino, metallica
17

appiani colours collections
18

MIX

mix neutral
26

mix color
28

mix wellness&pool
30

TEXTURE

dama
34

duetto
35

trio
36

diago
37

colore

appiani

Mosaico ceramico appiani
Ceramic mosaics
Mosaïque céramique
Keramikmosaik
Mosaico cerámico
Керамическая мозаика
公司的陶瓷马赛克

Le tessere di mosaico Appiani vengono fornite premontate con fuga di 1,6 mm su fogli in fibra di vetro di 30x30 cm. Il formato 1,2x1,2 cm è montato con fuga da 1,1 mm.

Lo spessore delle tessere è di 7,2 mm. La planarità delle tessere del mosaico ceramico Appiani e la leggera stondatura dei bordi rendono il prodotto liscio e gradevole al tatto facilitandone anche il mantenimento igienico.

The Appiani mosaic tesserae are supplied net mounted with a 1,6 mm joint on fiberglass net sheets sized 30x30 cm. Size 1.2x1.2 cm is supplied net mounted with a 1,1 mm joint. The tesserae are 7.2 mm thick. The flatness of Appiani ceramic mosaic tiles and the slight rounding of the edges make the product smooth and pleasant to the touch, also facilitating the hygiene maintenance.

Les tesselles de mosaïque Appiani sont montées avec un joint de 1,6 mm sur filets en fibre de verre de 30x30 cm. Le format 1,2x1,2 cm est monté avec joint de 1,1 mm. L'épaisseur des tesselles est de 7,2 mm.

La planéité des tesselles de la mosaïque céramique Appiani et le léger arrondi des bords rendent le produit lisse et agréable au toucher, facilitant aussi son entretien.

Die Mosaiksteine der Serie Appiani sind mit einer Fuge von 1,6 mm auf Glasfasernetz geklebt. Das Maß der Bögen beträgt 30x30 cm. Das Format 1,2x1,2 ist mit einer Fuge von 1,1 mm montiert.

Die Stärke der Mosaiksteine beträgt 7,2 mm. Die Ebenmäßigkeit der Keramikmosaiksteine Appiani und die leicht abgerundeten Fliesenkanten begründen das glatte und angenehme Berührungsfühl dieser Produkte, welche auch eine einfache hygienische Zweckdienlichkeit gewährleisten.

Las teselas de mosaico Appiani se entregan premontadas con juntas de 1,6 mm sobre hojas en fibra de vidrio de 30x30 cm, el formato 1,2x1,2 cm con junta de 1,1 mm.

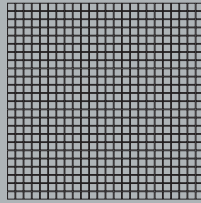
El espesor de las teselas es de 7,2 mm. La planaridad de las teselas del mosaico cerámico Appiani y la ligera redondez de los cantos, hace que el producto sea liso y agradable al tacto, facilitando también su mantenimiento higiénico.

Чипсы мозаики «Appiani» поставляются монтированными на сетке из стекловолокна формата 30 x 30 см (с промежуточными швами в 1,6 мм). Чипсы формата 1,2x1,2 монтированы с промежуточными швами в 1,1 мм. Толщина мозаичных чипсов 7,2 мм. Плоская поверхность чипсов керамической мозаики Appiani и легкая сглаженность краев делают продукцию гладкой и приятной для прикосновения, а также облегчают уход за ней.

Appiani 马赛克供货时，预先安装在 30x30 cm 的玻璃纤维网上，间隙为 1,6 mm。1,2x1,2 cm 规格马赛克间隙为 1,1 mm。马赛克厚度是 7,2 mm。Appiani 陶瓷马赛克平整度好，四边呈轻微圆弧形，产品表面光滑、触感舒适。

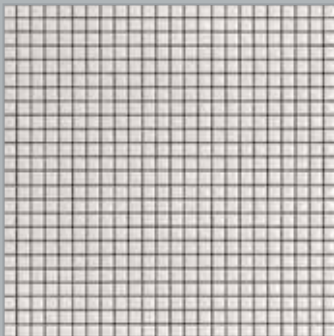
BASIC

diva



1,2 x 1,2 cm - 1/2" x 1/2"

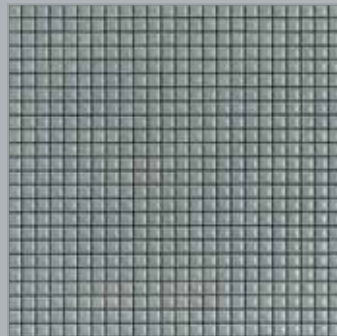
modulo/module/module/Modul/módulo/модуль/拼图组合
30 x 30 cm / 12" x 12"



SNOW (01)



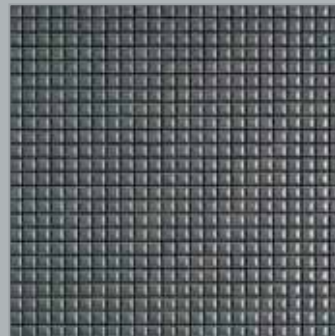
DIV 4001



LIGHT GREY (02)



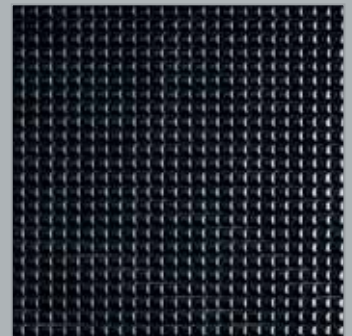
DIV 4002



DARK GREY (03)



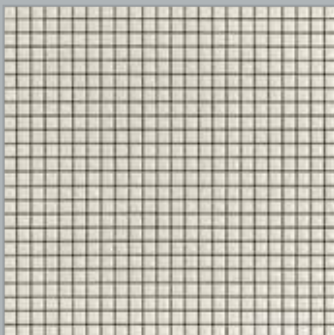
DIV 4003



BLACK (04)



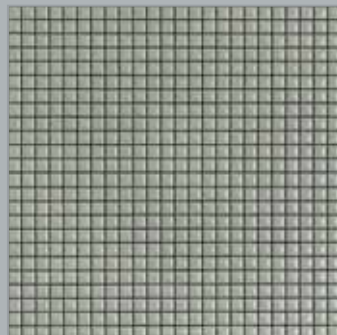
DIV 4004



CREAM (05)



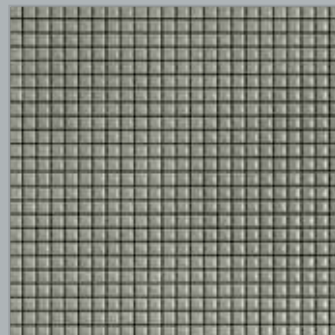
DIV 4005



LINEN (07)



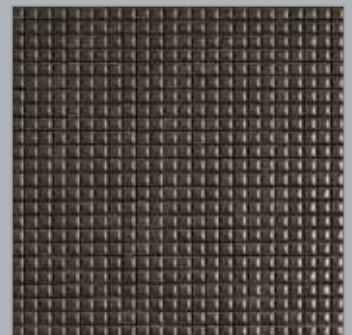
DIV 4007



TAUPE (08)



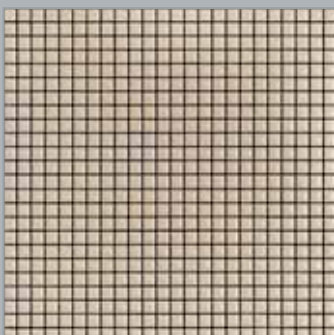
DIV 4008



BROWN (11)



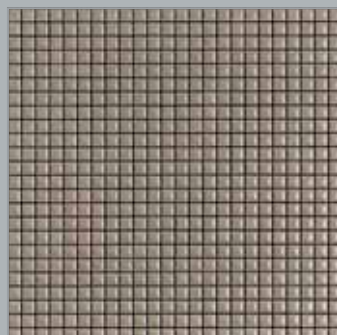
DIV 4011



IVORY (06)



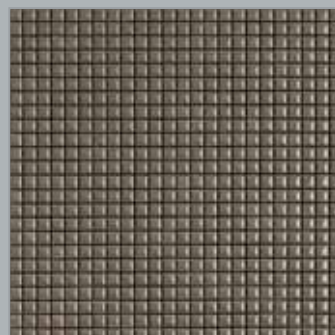
DIV 4006



SAND (09)



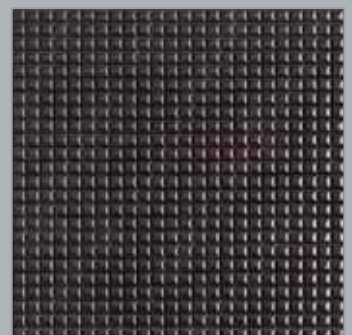
DIV 4009



HAVANA (10)



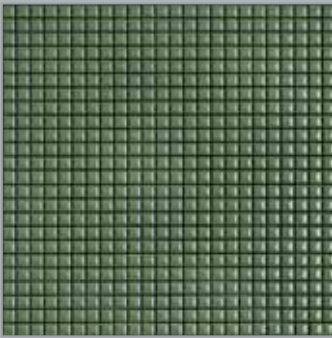
DIV 4010



COFFEE (12)



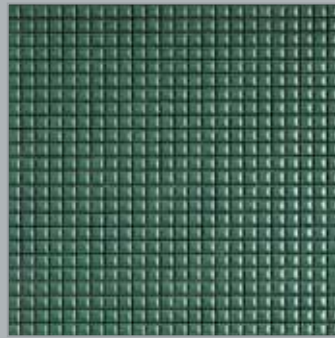
DIV 4012



OLIVE (13)



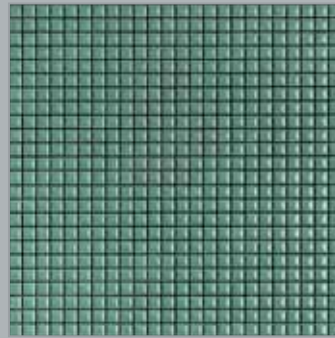
DIV 4013



EMERALD (14)



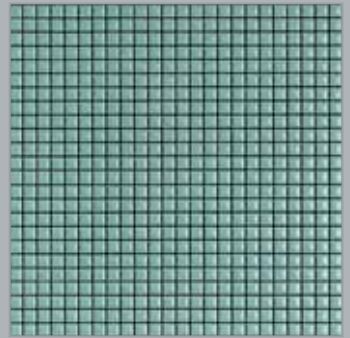
DIV 4014



JADE (15)



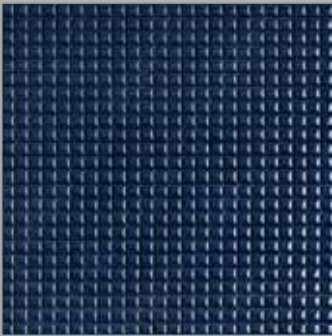
DIV 4015



AQUAMARINE (16)



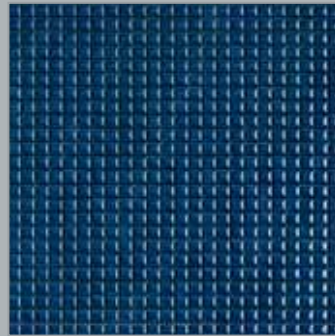
DIV 4016



DARK BLUE (20)



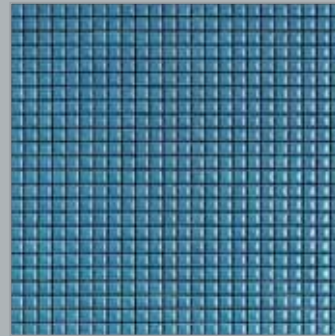
DIV 4020



ROYAL BLUE (19)



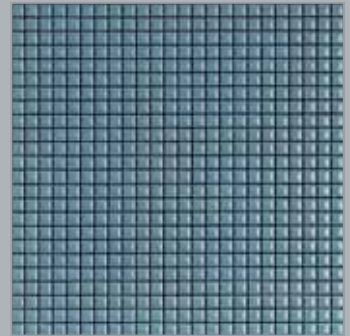
DIV 4019



TURQUOISE (18)



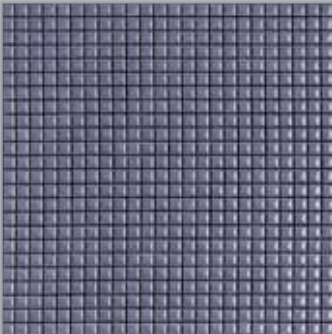
DIV 4018



AVIATION BLUE (17)



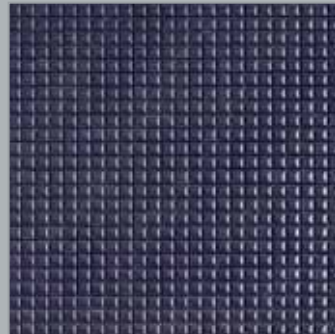
DIV 4017



VIOLET (21)



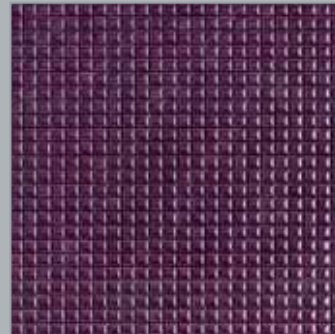
DIV 4021



PLUM (22)



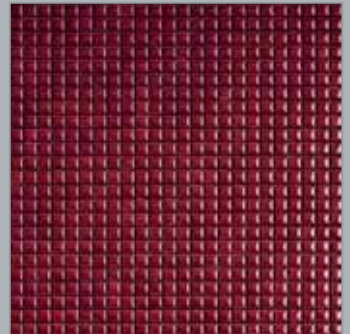
DIV 4022



PURPLE (23)



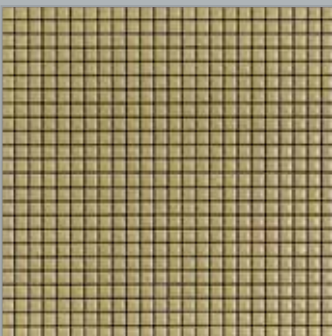
DIV 4023



BURGUNDY (24)



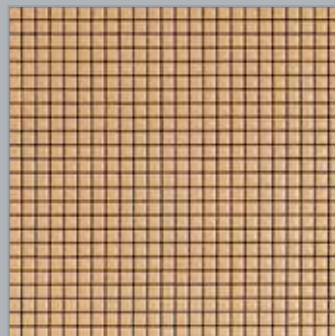
DIV 4024



MUSTARD (28)



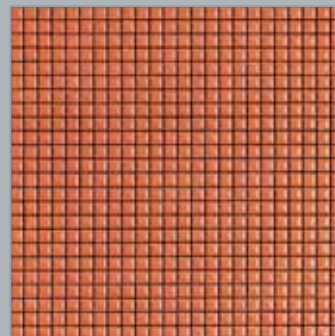
DIV 4028



ORANGE YELLOW (27)



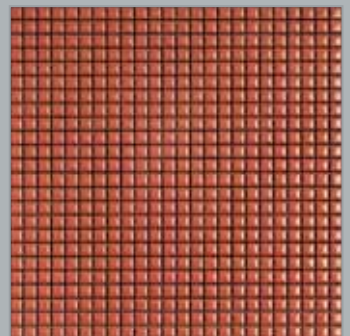
DIV 4027



ORANGE (26)



DIV 4026

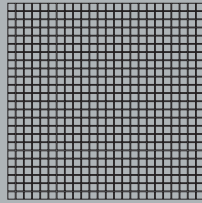


CORAL (25)

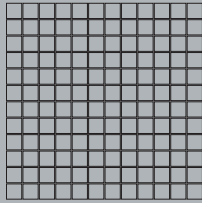


DIV 4025

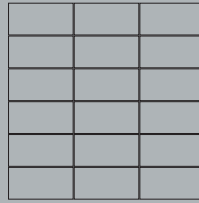
seta



1,2 x 1,2 cm - 1/2" x 1/2"

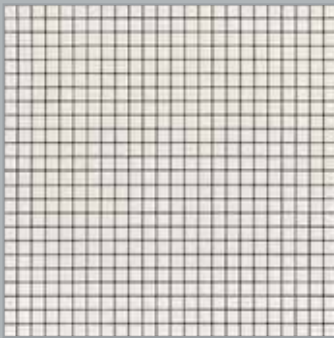


2,5 x 2,5 cm - 1" x 1"

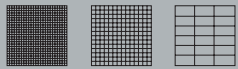


5 x 10 cm - 2" x 4"

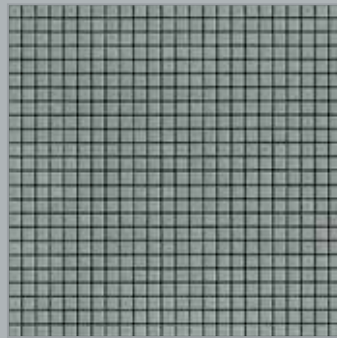
modulo/module/module/Modul/módulo/модуль/拼图组合
30 x 30 cm / 12" x 12"



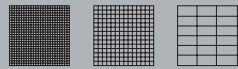
GHACCIO (01)



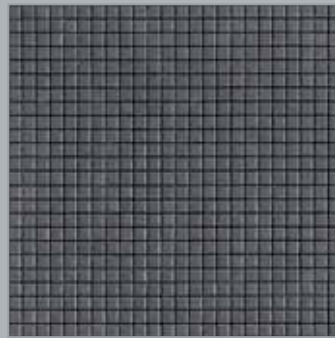
SET 4001 SET 7001 SET 2001



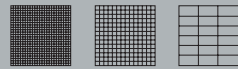
CEMENTO (20)



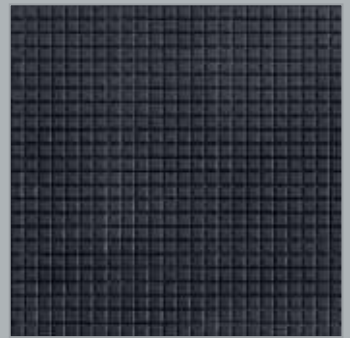
SET 4020 SET 7020 SET 2020



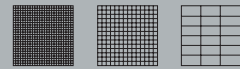
FUMO (03)



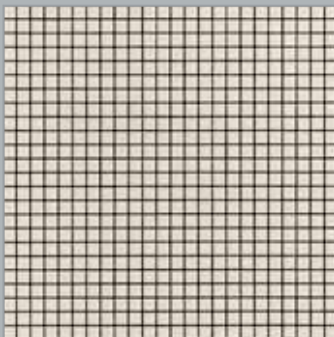
SET 4003 SET 7003 SET 2003



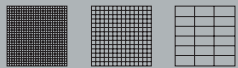
CARBONE (04)



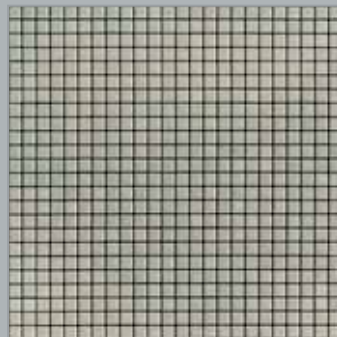
SET 4004 SET 7004 SET 2004



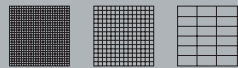
AVORIO (21)



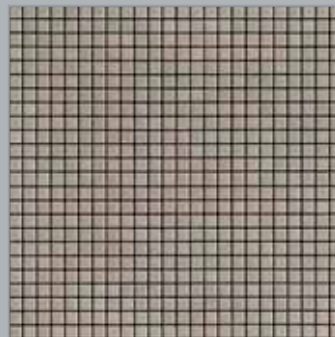
SET 4021 SET 7021 SET 2021



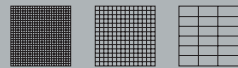
NUVOLA (02)



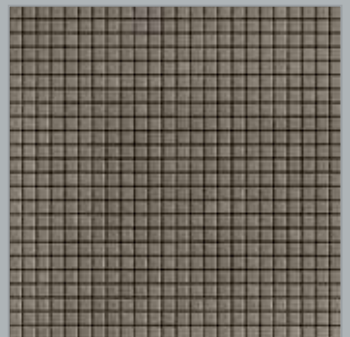
SET 4002 SET 7002 SET 2002



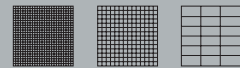
CORDA (22)



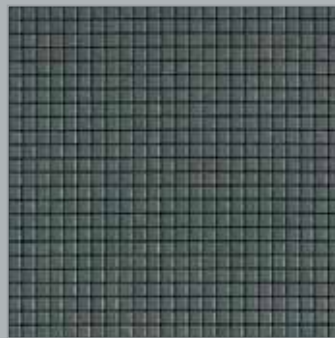
SET 4022 SET 7022 SET 2022



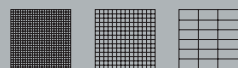
BRUNO (23)



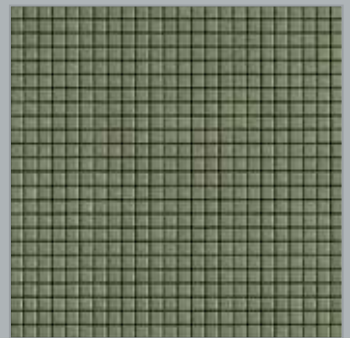
SET 4023 SET 7023 SET 2023



MIRTO (09)



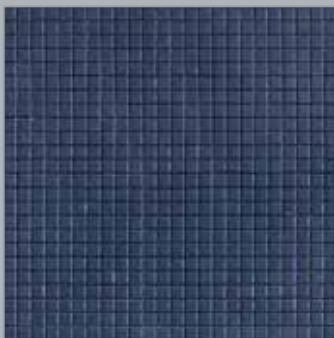
SET 4009 SET 7009 SET 2009



OLIVA (10)



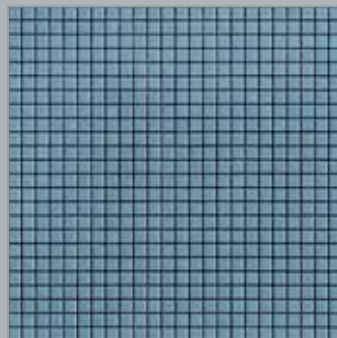
SET 4010 SET 7010 SET 2010



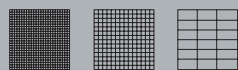
OCEANO (08)



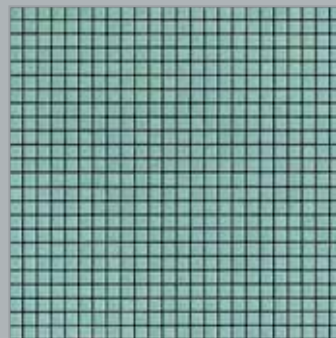
SET 4008 SET 7008 SET 2008



CARTAZUCCHERO (26)



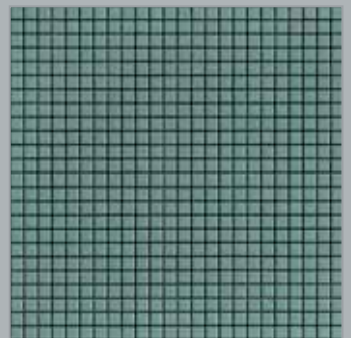
SET 4026 SET 7026 SET 2026



CIELO (25)



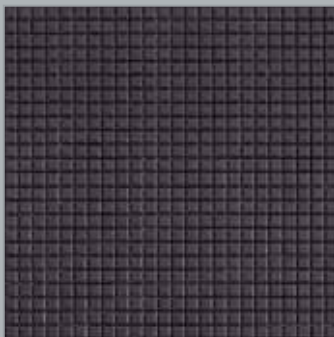
SET 4025 SET 7025 SET 2025



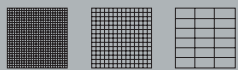
MENTA (24)



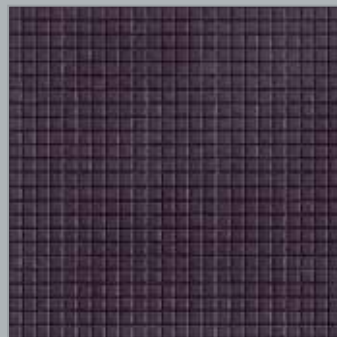
SET 4024 SET 7024 SET 2024



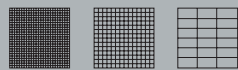
CACAO (05)



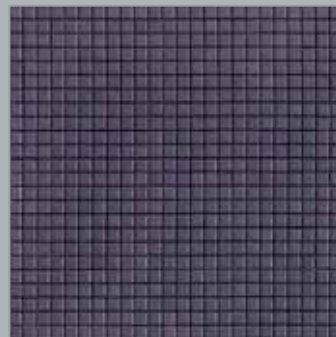
SET 4005 SET 7005 SET 2005



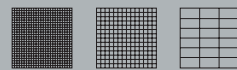
MELANZANA (06)



SET 4006 SET 7006 SET 2006



PRUGNA (07)



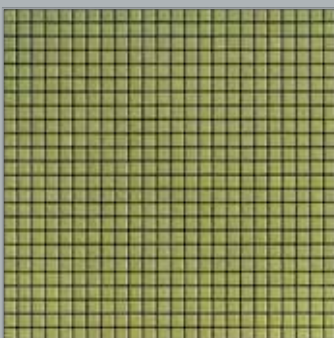
SET 4007 SET 7007 SET 2007



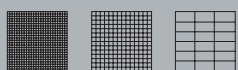
MARSALA (27)



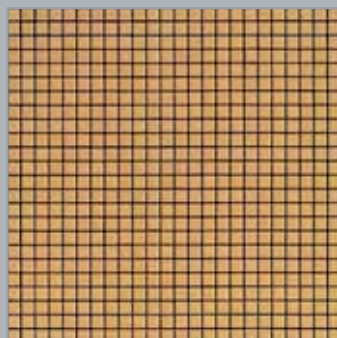
SET 4027 SET 7027 SET 2027



PRIMAVERA (11)



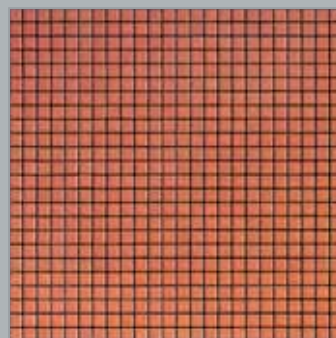
SET 4011 SET 7011 SET 2011



GIALLARANCIO (12)



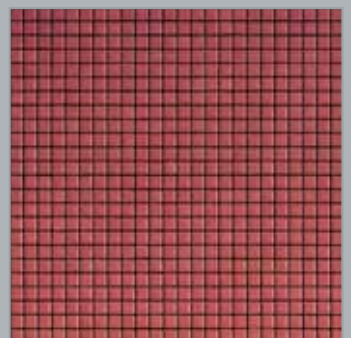
SET 4012 SET 7012 SET 2012



ARAGOSTA (13)



SET 4013 SET 7013 SET 2013

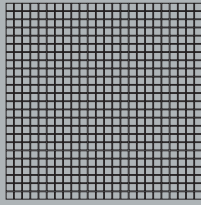


FUOCO (14)

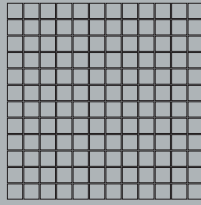


SET 4014 SET 7014 SET 2014

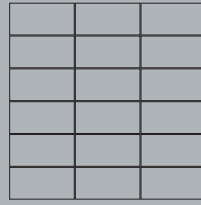
anthologia



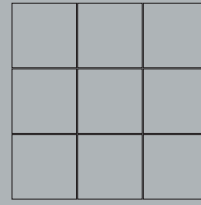
1,2 x 1,2 cm - 1/2" x 1/2"



2,5 x 2,5 cm - 1" x 1"

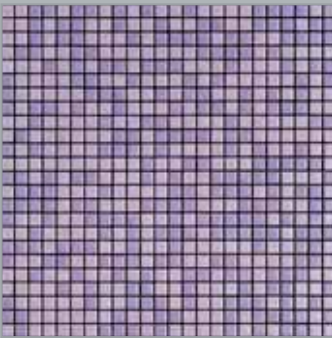


5 x 10 cm - 2" x 4"

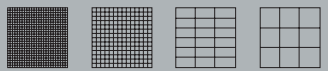


10 x 10 cm - 4" x 4"

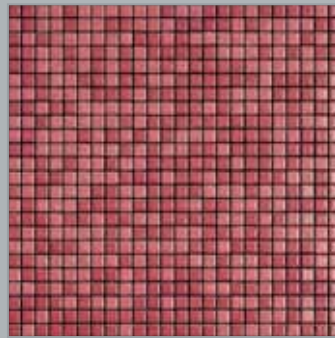
modulo/module/module/Modul/módulo/модуль/拼图组合
30 x 30 cm / 12" x 12"



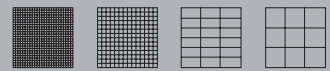
CICLAMINO (06)



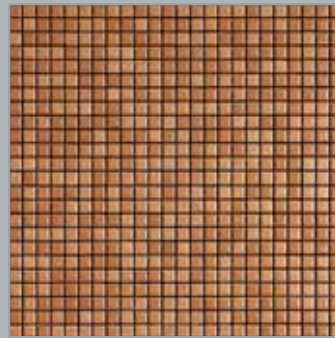
MOS 4006 MOS 7006 MOS 2006 MOS 9006



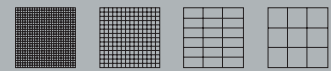
CAMELIA (05)



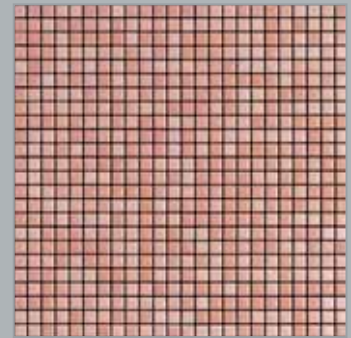
MOS 4005 MOS 7005 MOS 2005 MOS 9005



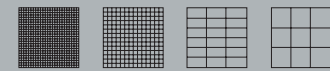
ALCHECHENGI (20)



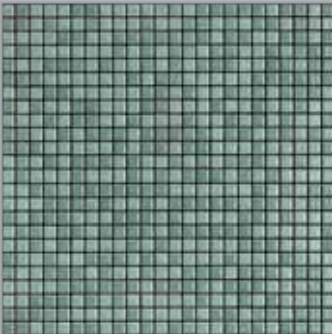
MOS 4020 MOS 7020 MOS 2020 MOS 9020



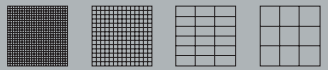
COSMEA (03)



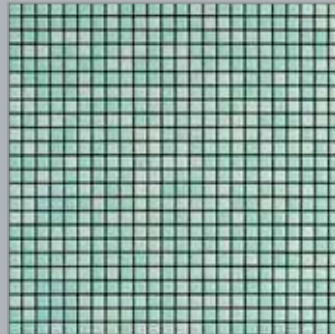
MOS 4003 MOS 7003 MOS 2003 MOS 9003



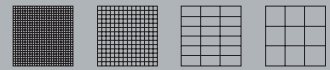
MANDRAGORA (15)



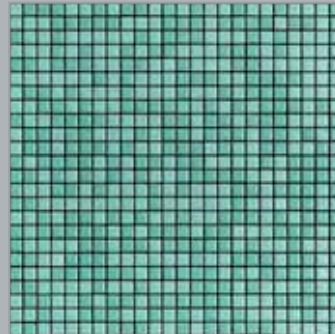
MOS 4015 MOS 7015 MOS 2015 MOS 9015



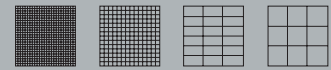
AGERATO (21)



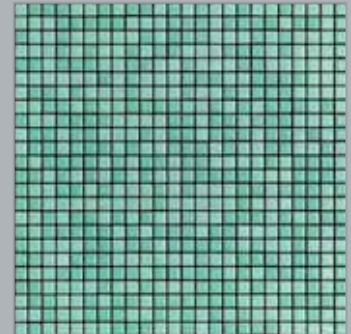
MOS 4021 MOS 7021 MOS 2021 MOS 9021



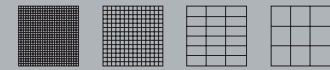
MALVA (22)



MOS 4022 MOS 7022 MOS 2022 MOS 9022



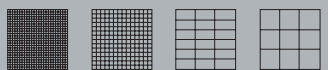
NASTURZIO (16)



MOS 4016 MOS 7016 MOS 2016 MOS 9016



ARALIA (33)



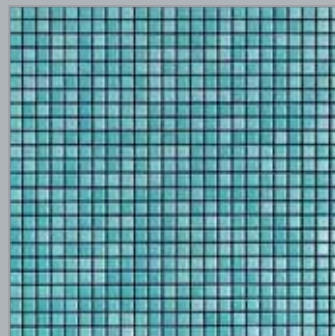
MOS 4033 MOS 7033 MOS 2033 MOS 9033



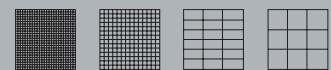
LAVANDA (23)



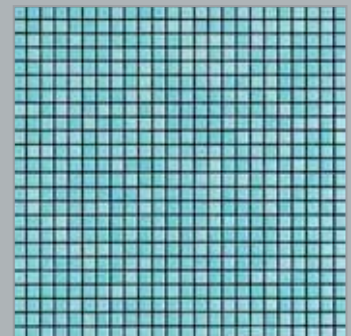
MOS 4023 MOS 7023 MOS 2023 MOS 9023



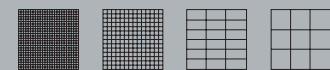
GLAUCA (35)



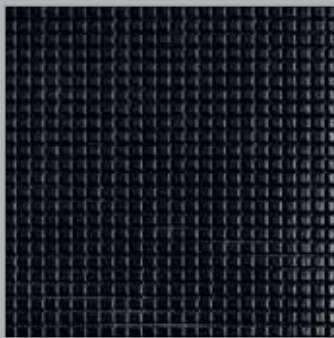
MOS 4035 MOS 7035 MOS 2035 MOS 9035



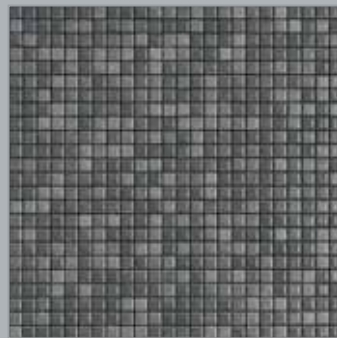
FIORDALISO (17)



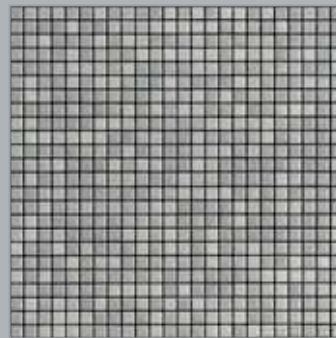
MOS 4017 MOS 7017 MOS 2017 MOS 9017



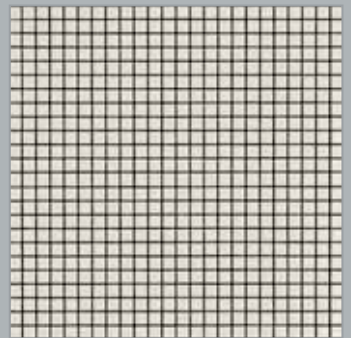
TULIPANO NERO (10)



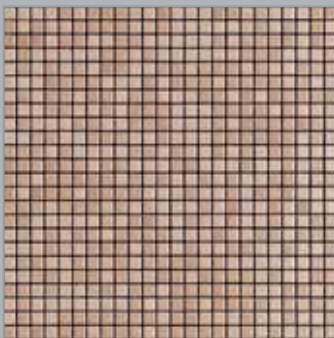
PLUMBAGO (04)



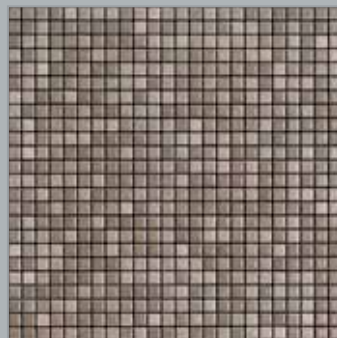
CLEMATIDE (09)



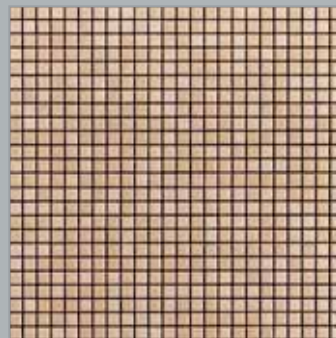
CALLA (13)



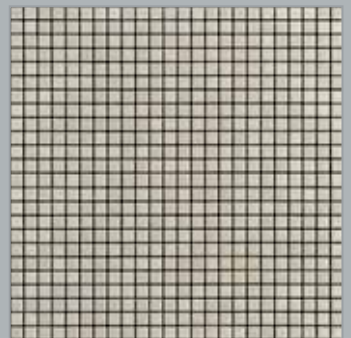
TIGLIO (08)



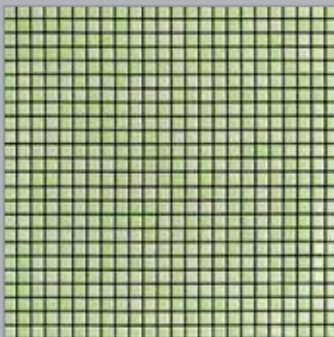
VIBURNO (27)



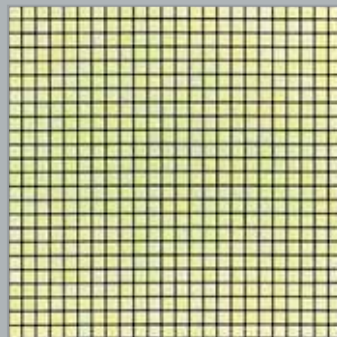
GELSOMINO (07)



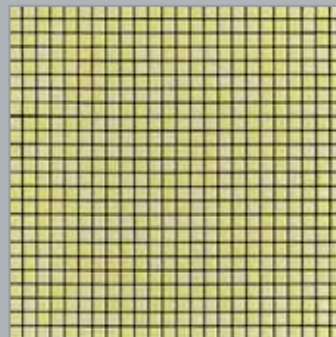
FLOS (25)



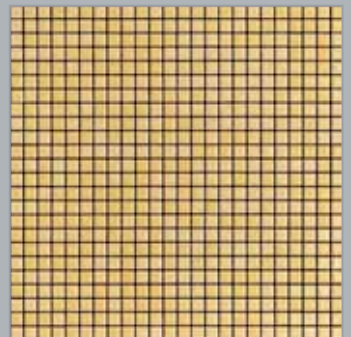
GLADIOLO (28)



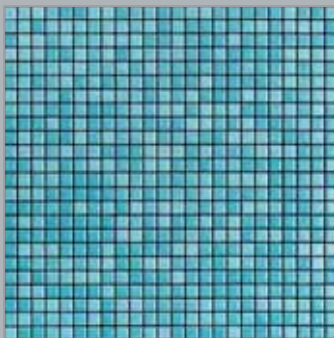
FORSIZIA (14)



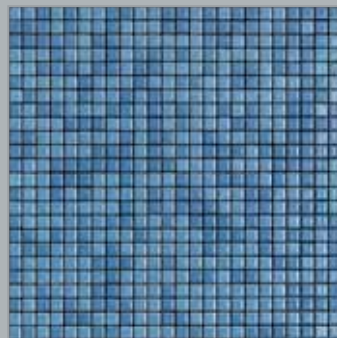
GIRASOLE (19)



MIMOSA (29)



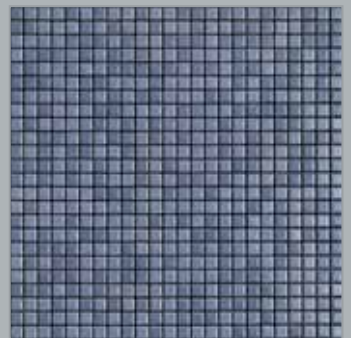
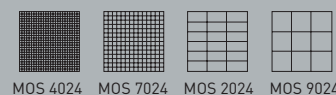
HIBISCUS (18)



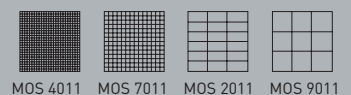
MUSCARI (30)



AGAPANTO (24)

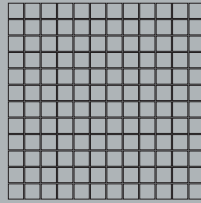


ANEMONE (11)



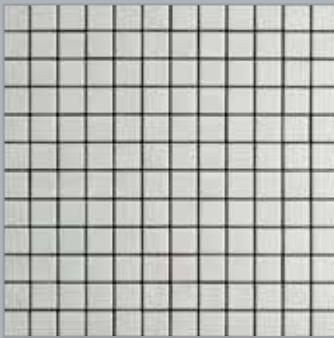
anthologhia antisdrucchiolo (R10-B)

Skid-Resistant - Anti-Dérapant - Rutschfest - Antideslizante - Анти-Скольжение - 防滑

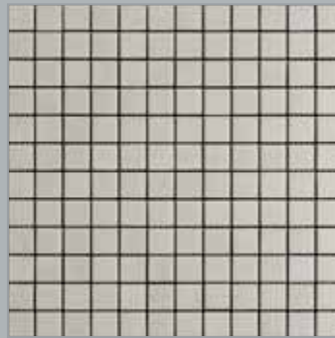


2,5 x 2,5 cm - 1" x 1"

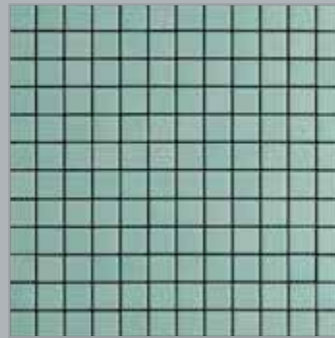
modulo/module/module/Modul/módulo/модуль/拼图组合
30 x 30 cm / 12" x 12"



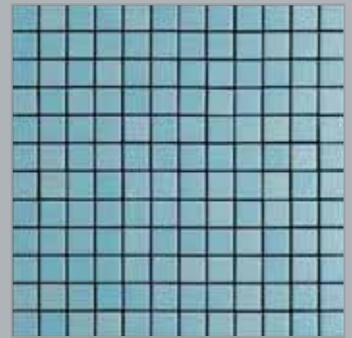
CALLA
MAS 713B



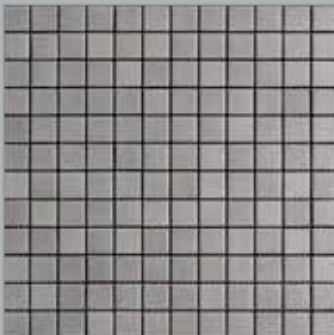
FLOS
MAS 725B



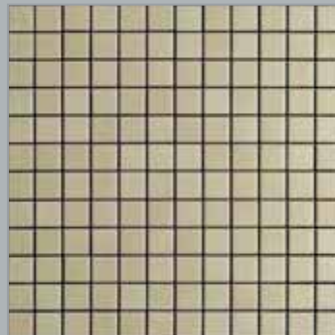
AGERATO
MAS 721B



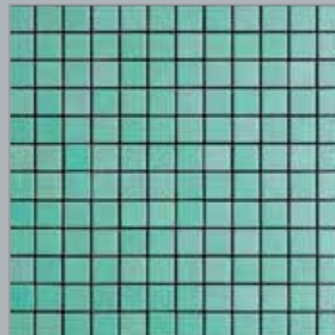
FIORDALISO
MAS 717B



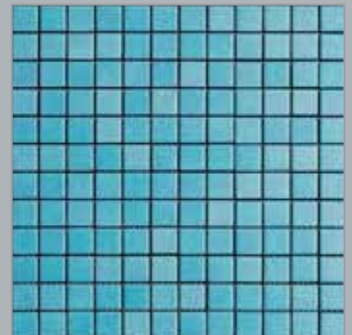
CLEMATIDE
MAS 709B



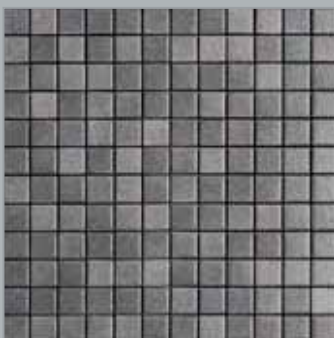
GELSOMINO
MAS 707B



MALVA
MAS 722B



HIBISCUS
MAS 718B



PLUMBAGO
MAS 704B



VIBURNO
MAS 727B



ARALIA
MAS 733B



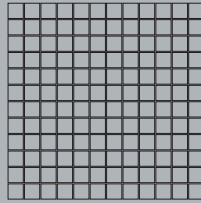
AGAPANTO
MAS 724B



2,5 x 2,5 cm - 1" x 1"

anthologia antisdrucchiolo (R11-C)

Skid-Resistant - Anti-Dérapant - Rutschfest - Antideslizante - Анти-Скольжение - 防滑

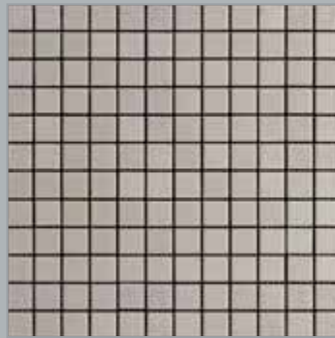


2,5 x 2,5 cm - 1" x 1"

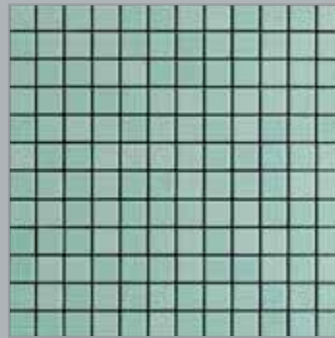
modulo/module/module/Modul/módulo/модуль/拼图组合
30 x 30 cm / 12" x 12"



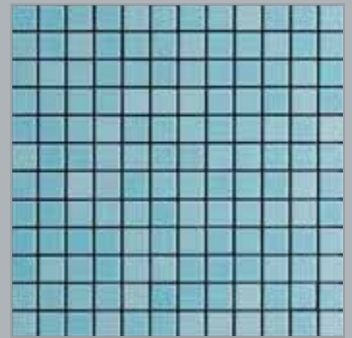
CALLA
MAS 713C



FLOS
MAS 725C



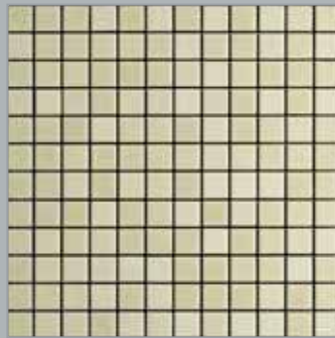
AGERATO
MAS 721C



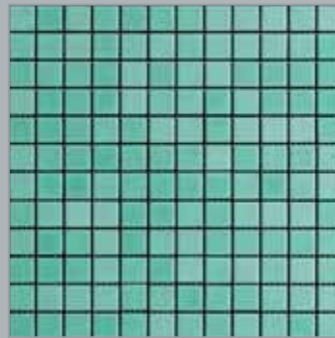
FIORDALISO
MAS 717C



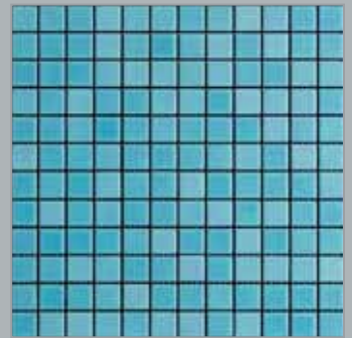
CLEMATIDE
MAS 709C



GELSOMINO
MAS 707C



MALVA
MAS 722C



HIBISCUS
MAS 718C



PLUMBAGO
MAS 704C



VIBURNO
MAS 727C



ARALIA
MAS 733C



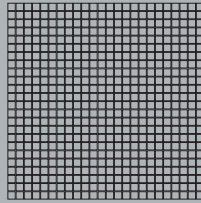
AGAPANTO
MAS 724C



2,5 x 2,5 cm - 1" x 1"

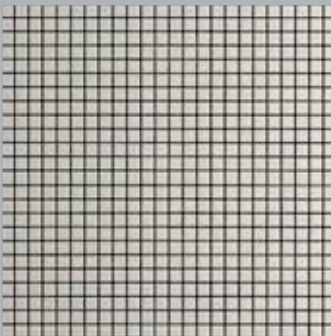
anthologia antisdrucchiolo (R12-C)

Skid-Resistant - Anti-Dérapant - Rutschfest - Antideslizante - Анти-Скольжение - 防滑

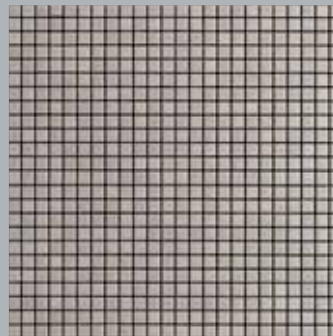


1,2 x 1,2 cm - 1/2" x 1/2"

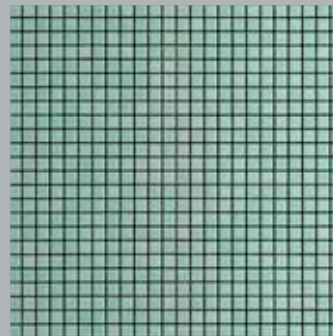
modulo/module/module/Modul/módulo/модуль/拼图组合
30 x 30 cm / 12" x 12"



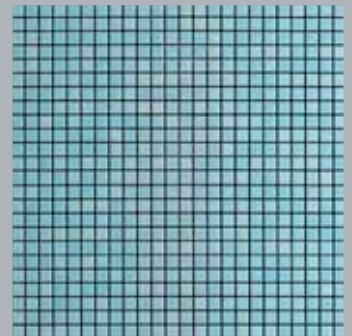
CALLA
MAS 413C



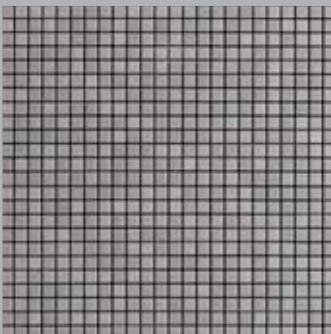
FLOS
MAS 425C



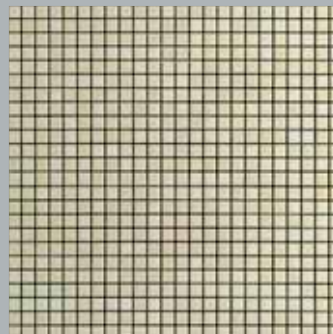
AGERATO
MAS 421C



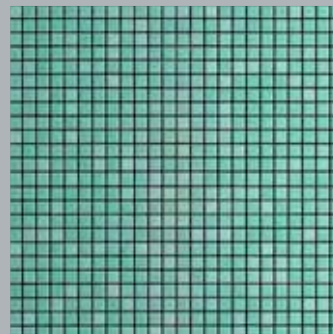
FIORDALISO
MAS 417C



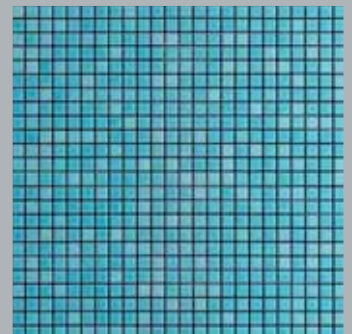
CLEMATIDE
MAS 409C



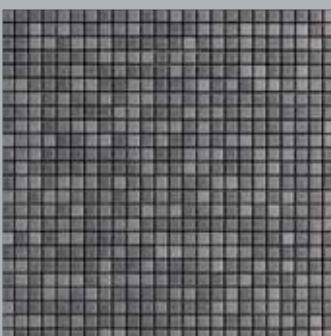
GELSOMINO
MAS 407C



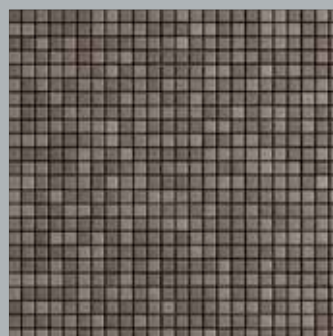
MALVA
MAS 422C



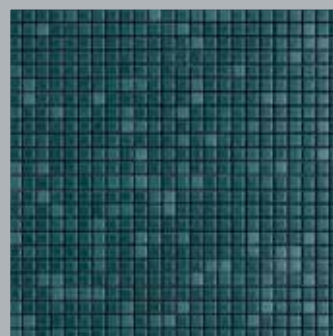
HIBISCUS
MAS 418C



PLUMBAGO
MAS 404C



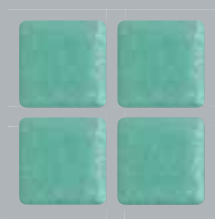
VIBURNO
MAS 427C



ARALIA
MAS 433C



AGAPANTO
MAS 424C



1,2 x 1,2 cm - 1/2" x 1/2"

anthologhia pezzi speciali

Trim Pieces - Pièces Spéciales - Formstücke - Piezas Especiales - Специальные детали - 饰边

I pezzi speciali della linea Anthologhia sono realizzati in monocottura e l'abbinamento di questi con i colori in monopressocottura è possibile accettando le differenze di tonalità.
Disponibili nei 28 colori Anthologhia.

The trim pieces of the Anthologhia range are produced in singlefiring: their combination with those of single-press firing is possible, however shades differences must be accepted.
Available in the 28 Anthologhia colours.

Les pièces spéciales de la ligne Anthologhia o sont réalisées en monocuisson et il est possible de combiner ces pièces avec les couleurs en monocuisson sous pression si l'on accepte les différences de tonalité. Elles existent en 28 coloris Anthologhia.

Die Formstücke der Serie Anthologhia sind Einbrandverfahren-Erzeugnisse. Die Verlegung mit den Farben der Serie Einbrandpressverfahren ist möglich, jedoch müssen Farbabweichungen akzeptiert werden. Erhältlich in den 28 Farben Anthologhia.

Las piezas especiales de la línea Anthologhia están realizadas en monococción y la combinación de estos colores en monococción por prensado es posible aceptando las diferencias de tonalidad.
Disponibles en los 28 colores de Anthologhia.

Специальные детали серии Anthologhia выполнены методом однократного обжига, и при их компоновке с цветной плиткой монопрессобжига следует учитывать разницу цветового тона. Выполнены в 28 цветах серии Anthologhia.

Anthologhia 的饰边一次烘焙方法所制，能与一次烘焙成形的产品混合使用，但细微色差在所难免。Anthologhia 系列备有28种颜色。



CO MOS

2,5 x 10 cm / 1" x 4"



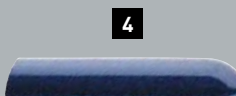
COS MO

2,5 x 12 cm / 1" x 4 3/4"



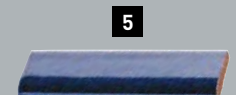
CA MOS

2,5 x 10 cm / 1" x 4"



COS MO

2,5 x 12 cm / 1" x 4 3/4"



TR MOS

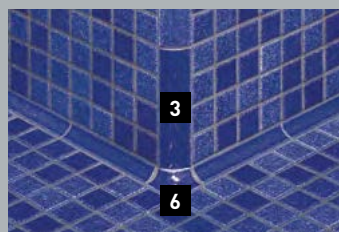
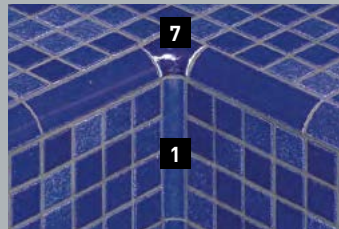
2,5 x 10 cm / 1" x 4"



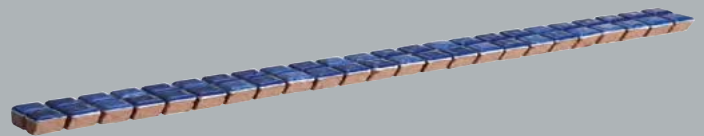
POM CA (convesso)
2,5 x 2,5 cm / 1" x 1"



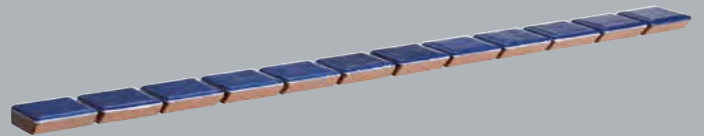
POM CO (concavo)
2,5 x 2,5 cm / 1" x 1"



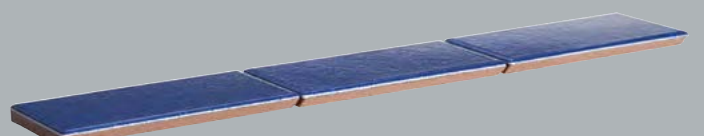
JOLLY MONOPRESSOCOTTURA
SINGLE PRESS-FIRING JOLLY
JOLLY MONOCUISSON SOUS PRESSION
JOLLY EINPRESSBRANDVERFAHREN
JOLLY MONOCOCCIÓN POR PRENSADO
JOLLY МОНОПРЕССОБЖИГ
JOLLY 一次烘烤成形



1,2 x 1,2 cm - 1/2" x 1/2" [2,5 x 30 cm - 1" x 12"]



2,5 x 2,5 cm - 1" x 1" [2,5 x 30 cm - 1" x 12"]



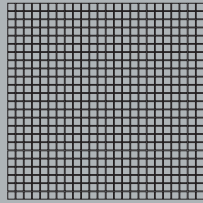
5 x 10 cm - 2 x 4" [5 x 30 cm - 2" x 12"]



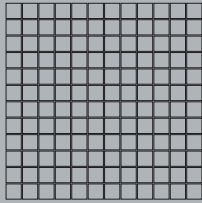
10 x 10 cm - 4 x 4" [10 x 30 cm - 4" x 12"]

Lavorazione materiali a jolly (angolo 45°) su richiesta.
Jolly material working (45° angle) executed on request.
Sur demande, façonnage des matériaux à jolly (angle 45°).
Auf Wunsch Bearbeitung von Joker-Material (45°-Winkel).
Elaboración materiales "jolly" (ángulo 45°) a pedido.
Обработка универсальными деталями под 45° по запросу.
Jolly材料(45度角)按需求而生产

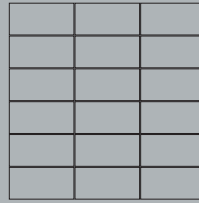
open space



1,2 x 1,2 cm - 1/2" x 1/2"



2,5 x 2,5 cm - 1" x 1"

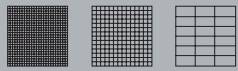


5 x 10 cm - 2" x 4"

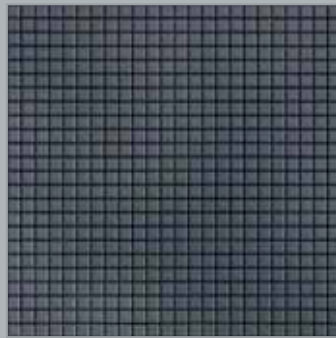
modulo/module/module/Modul/módulo/модуль/拼图组合
30 x 30 cm / 12" x 12"



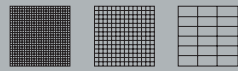
RUTILE (04)



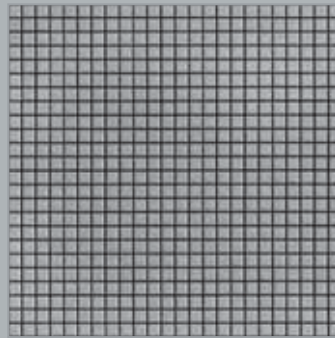
OPS 4004 OPS 7004 OPS 2004



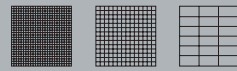
EMATITE (03)



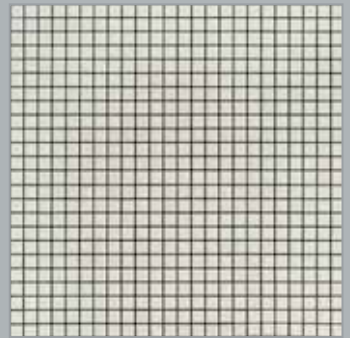
OPS 4003 OPS 7003 OPS 2003



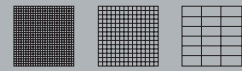
ANKERITE (02)



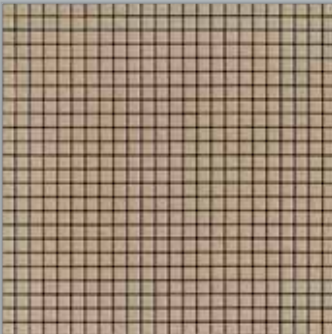
OPS 4002 OPS 7002 OPS 2002



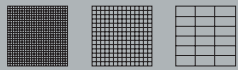
CALCITE (01)



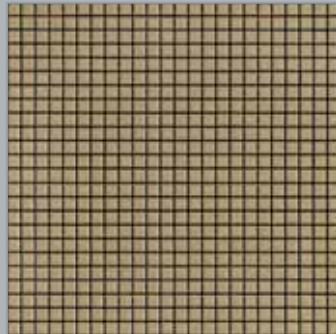
OPS 4001 OPS 7001 OPS 2001



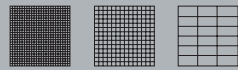
ZIRCONIO (07)



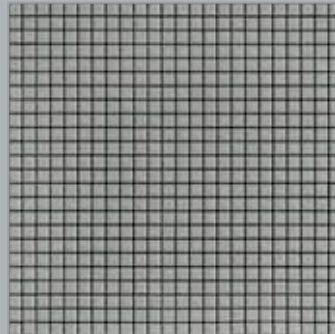
OPS 4007 OPS 7007 OPS 2007



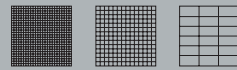
CERIO (08)



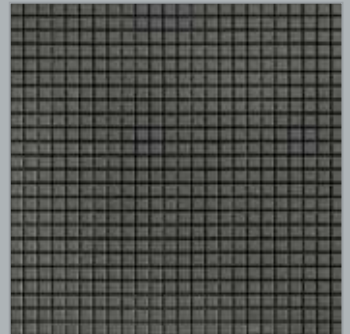
OPS 4008 OPS 7008 OPS 2008



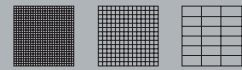
VANADIO (06)



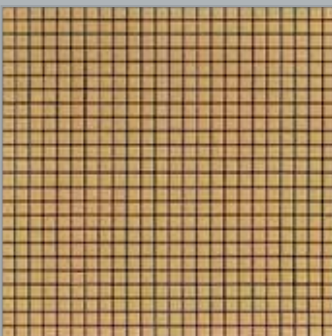
OPS 4006 OPS 7006 OPS 2006



RAMINA (05)



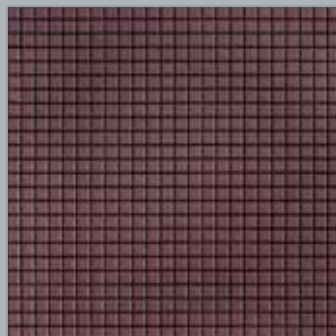
OPS 4005 OPS 7005 OPS 2005



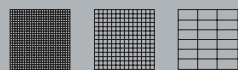
SIDERITE (09)



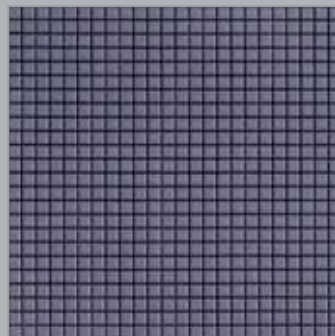
OPS 4009 OPS 7009 OPS 2009



FERRO (10)



OPS 4010 OPS 7010 OPS 2010



PIRROTINA (11)



OPS 4011 OPS 7011 OPS 2011

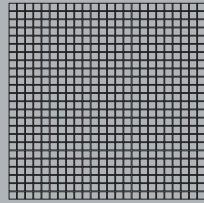


AZZURRITE (12)

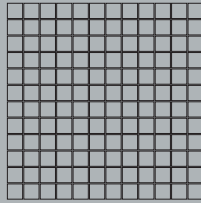


OPS 4012 OPS 7012 OPS 2012

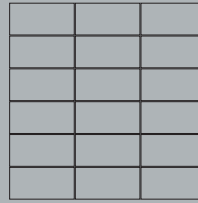
oro, platino, metallica



1,2 x 1,2 cm - 1/2" x 1/2"

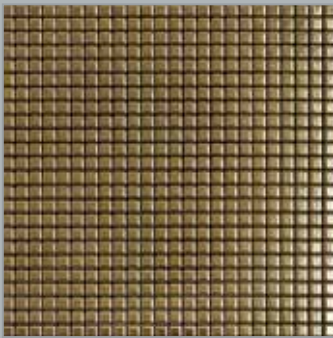


2,5 x 2,5 cm - 1" x 1"



5 x 10 cm - 2" x 4"

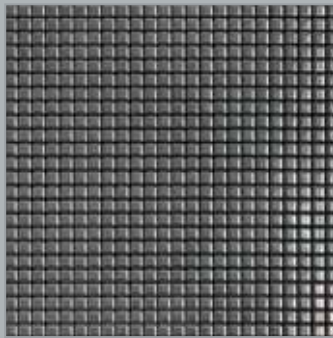
modulo/module/module/Modul/módulo/модуль/拼图组合
30 x 30 cm / 12" x 12"



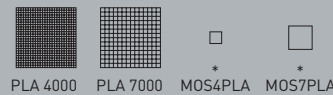
ORO



ORO 4000 ORO 7000 MOS40RO MOS70RO



PLATINO



PLA 4000 PLA 7000 MOS4PLA MOS7PLA

Materiale con finitura ad effetto "cangiante". Può assumere riflessi e colorazioni diverse dal campione rappresentativo.

Material with "changing" effect finish. The effects and colours may be different from the representative sample.

Matériel avec finition effet « chatoyant ». Peut prendre des colorations et des reflets différents de l'échantillon représentatif.

Material mit einer „schillernden“ Oberflächenbehandlung. Diese kann

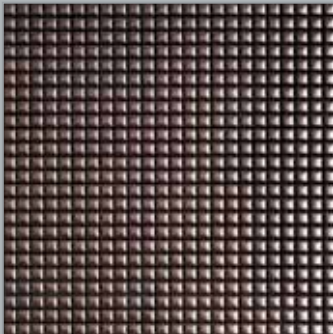
Reflexe und Einfärbungen annehmen, die vom dargestellten Muster abweichen.

Material con acabado de efecto "cambiante". Puede asumir reflejos y coloraciones que difieren de la muestra representativa.

Материал с отделкой с «переливчатым» эффектом. Может приобретать отблески и окраску, отличные от типичного образца.

使用“闪色”效果加工的材料。可能具有与样品不同的反射和颜色

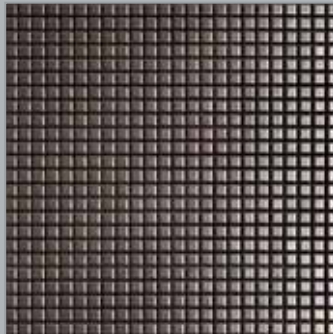
* Vendita a pezzo singolo / Sale per piece / Vente à la pièce / in Einzelstückverkauf / Venta a la pieza / поштучная продажа / 以每片出售



RAME (13)



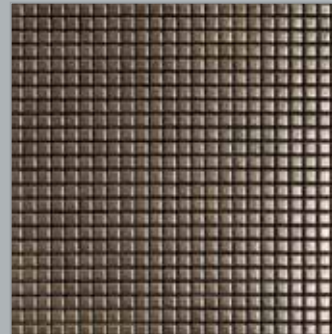
MTLC413



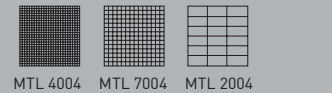
CUPRITE (07)



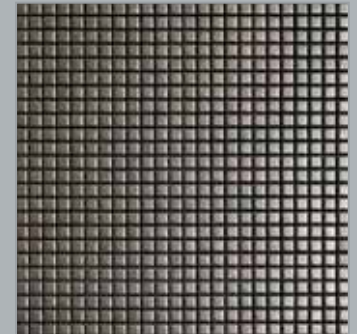
MTL 4007 MTL 7007 MTL 2007



BRONZO (04)



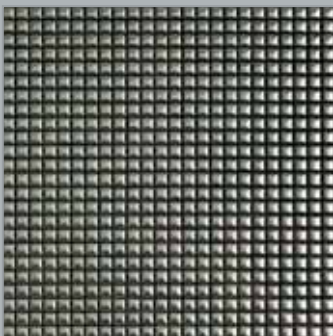
MTL 4004 MTL 7004 MTL 2004



PIRITE (05)



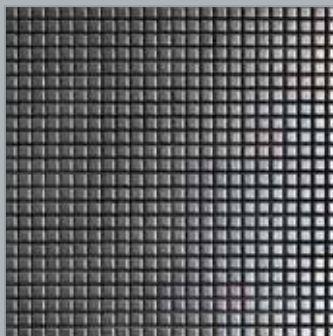
MTL 4005 MTL 7005 MTL 2005



ACCIAIO (12)



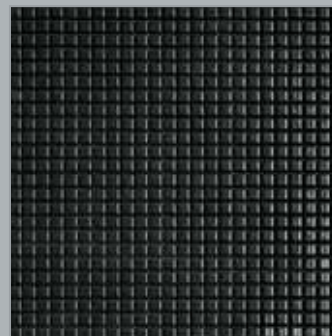
MTLC412



ALLUMINIO (06)



MTL 4006 MTL 7006 MTL 2006



RIFLESSI (11)



MTL 4011 MTL 7011 MTL 2011



CRISTALLI (09)



MTL 4009 MTL 7009 MTL 2009

BASIC appiani colours collections

diva

L'accentuata rotondità delle tessere in monopressocottura e l'estrema lucentezza della superficie smaltata, rendono "Diva" una collezione di mosaico unica per la sua profondità.

Contrasti di chiari e scuri, riflessi, effetti e giochi di luce ne mettono in risalto la bellezza della gamma cromatica e la finitura brillante.

The accentuated rounded edges of the single-press firing tesserae and the high gloss finishing of their glazed surface make "Diva" a mosaics collection unique for its colour intensity.

The contrasts of dark and light tones, the reflections and the shimmering light emphasize the full beauty of the chromatic range and the high gloss finishing.

La rondeur accentuée des bords des tesselles en monocuisson et la brillance extrême de la surface émaillée font de "Diva" une collection de mosaïque unique en raison de sa profondeur.

Des contrastes de clairs obscurs, des reflets, des effets et des jeux de lumière soulignent la beauté de sa gamme chromatique et de sa finition brillante.

Die abgerundete Oberfläche von diesem, im Einpressbrandverfahren hergestellte Mosaiksteinchen und dessen hoch-glanz Glasur, machen von der Serie Diva ein einzigartige Mosaikserie.

Hell-Dunkel-Kontraste, Reflexe und faszinierende Lichtspiele bringen die Schönheit der Farbauswahl und der glänzenden Oberfläche zur Geltung.

La redondez acentuada de las teselas de monococción por prensado y el brillo intenso de la superficie esmaltada, hacen de "Diva" una colección de mosaico única por su profundidad.

Los contrastes de claros y oscuros y los efectos y juegos de luces resaltan la belleza de la gama de colores y el acabado brillante.

Подчеркнутая округлость плитки, созданной с помощью метода монопрессообжига, неповторимый блеск глазурованной поверхности и ее глубина, делают коллекцию мозаики "Diva" уникальной. Контрасты света и тени, рефлекссы, эффекты и игра света подчеркивают красоту ее цветовой гаммы и великолепной отделки.

一次性压制烧成的马赛克瓷砖边角圆润，釉面光泽闪亮，令"Diva"马赛克系列颜色对比强烈，独一无二。颜色的深浅对比，光泽的反射、变幻效果，令色彩更加华美、表面更加闪亮。

seta

Smalti ceramici con finitura opaca propongono inusuali giochi d'ombra, luci e superfici.

La serie "Seta" in monopressocottura è adatta per tutti gli usi a rivestimento in ambito residenziale, commerciale e per i luoghi del benessere. L'uso a pavimento di tali prodotti è consigliato per bagni ed ambienti a traffico moderato.

Matt finishing glazes create unusual games of shadows, lights and surfaces.

The Seta single-press firing ranges is suited to all tiling uses in residential, commercial and wellbeing settings. These products are recommended for floor tiling only in residential bathrooms and other areas with light traffic.

Emaux céramiques avec finition mate créent insolites jeux d'ombre, lumière, surfaces.

Les séries Seta en monocuisson sous pression sont proposées pour toutes les applications comme revêtement mural dans le domaine résidentiel, commercial et les lieux de détente. L'utilisation de ces produits pour le carrelage des sols est conseillée dans les salles de bains du secteur résidentiel et les espaces où le passage est modéré.

Keramische Glasuren in matten Farben verleihen unendliche Spiele aus Schatten, Licht und Oberflächen.

Die Serie Seta, die mit dem Einbrandpressverfahren hergestellt wird, ist für die Wandverkleidung in Wohn-, Gewerbe- und Wellnessbereichen ideal. Die Verwendung als Bodenbelag wird nur für Bäder in Wohnbereichen und für Räume mit geringer Trittbelastung empfohlen.

Esmaltes cerámicos con acabado mate proponen inusuales juegos de sombras, luces y superficies.

La serie Seta de monococción por prensado se propone para todos los usos como revestimiento en los ámbitos residencial y comercial y para los lugares dedicados al bienestar. El uso de dichos productos como pavimento está aconsejado para baños residenciales.

Керамические эмали с матовой отделкой предлагают необычную игру теней, света и поверхностей.

Серия монопрессообжика "Seta" предлагается для использования в жилых, коммерческих помещениях и помещениях бассейна и сауны. Напольная укладка только в ванных комнатах жилых помещений.

亚光釉面瓷砖创造出一种深浅不同、光泽度对比都非同寻常的表面效果。

"Seta"系列一次压烧产品可用于住宅、商业场所和康体场所的墙壁铺设。使用这些产品铺设地板时，建议用于住宅卫生间和人行少的环境。

open space

La linea Open Space in monopressocottura propone una serie di colori naturali con superficie opaca che, unitamente alle miscele e alle finiture antidrucciolo, ne permettono l'utilizzo per pavimentazioni, facciate esterne, zone balneazione di piscine, nonché per particolari progettazioni d'interni e arredo urbano.

The Open Space line in single-press firing offers a series of natural colours with matt finish that, with the blends and the anti slip finishes, allows its use for exterior floors and walls, pool areas, urban design and distinguished interior design projects.

La série Open Space en monocuisson sous pression propose sur une surface satinée avec des finitions anti-dérapantes, une palette de couleurs naturelles, permettant à votre créativité de s'exprimer sur pour tous types de projets de décoration. projets intérieurs: sols et murs. Projets extérieurs: zone loisir des piscines, façades.

Die Linie Open- Space in Einbrandpressverfahren präsentiert sich, in einer Farben Auswahl, die sich an den natürlichen Tonerden Farben unser Region inspiriert, mit einer satinierten- matten Oberfläche. Zusammen mit den Mischungen und der Rutschfesten Verarbeitung ermöglicht, diese neue Linie, einen besonders geeigneten Einsatz für horizontale, wie vertikale, Außen Fassaden und für technische, trittsichere Bodenbelege in Innenstadt- Bereich.

La linea Open Space en monococción por prensado propone una serie de colores naturales con superficie matt que, junto a las mezclas y a los acabados antideslizante, permiten la utilización para pavimentaciones, fachadas exteriores, zonas de balneación piscinas, espacios urbanos y para particulares proyectos de interiores.

Серия керамических плиток одноразового обжига под прессом "Опен Спейс" предлагает изделия натуральных цветов, с сатинированной поверхностью, с предохраняющей от скольжения отделкой и смесью оттенков, что делает их пригодными как для покрытия полов, наружных фасадов, купальных зон бассейнов, так и для использования в отделке интерьеров и общественных мест.

一次压制烧成的 Open Space 系列 具有一系列天然颜色, 和磨砂表面, 结合防滑混合和防滑表面处理, 可用于地面, 室外正面, 游泳池的游泳区, 以及室内特殊设计 和城市公共设施。

anthologhia

I colori della linea Anthologhia in monopressocottura hanno la caratteristica di proporsi con diverse tonalità che permettono di realizzare campiture piacevolmente "mosse".

Anthologhia è un prodotto con superficie smaltata semilucida. La linea è completata da pezzi speciali e finiture antidrucciolo.

The colours of the Anthologhia line in single-press firing have the particular characteristic of being in different shades creating fields with a pleasant "wavy" effect. Anthologhia is a product with a semi-glossy glazed surface. The line is completed by special trim pieces and skid-proof surface finishes.

Les coloris de la ligne Anthologhia en monocuisson sous pression sont proposés dans tonalités différentes. Cette caractéristique permet de réaliser des réchampissages agréablement «ondoyants». Anthologhia est un produit à la surface émaillée semi-lustrée. La ligne est complétée par des pièces spéciales et des finitions antidérapantes.

Die Farben der im Einbrandpressverfahren hergestellten Linie Anthologhia werden in unterschiedlichen Nuancen angeboten, die so verlegt werden können, dass eine interessante „bewegte“ Wirkung entsteht. Anthologhia ist eine Fliese mit glasierter, halbgänzender Oberfläche. Diese Linie beinhaltet auch Formteile und Fliesen mit rutschfesten Oberflächen.

Los colores de la línea Anthologhia en monococción por prensado están caracterizados por proponerse en tonalidades diferentes de color que permiten realizar efectos agradablemente "movidos". Anthologhia es un producto con acabado esmaltado semibrillante. La línea se completa con piezas especiales y acabados antideslizamiento.

Цвета серии монопрессообжига «Anthologia» характеризуются разнообразием цветового тона, что позволяет создавать поверхности с приятным эффектом «волнистости». Anthologhia – это изделие с полуглянцевой эмалированной поверхностью. Серию дополняют специальные элементы и противоскользящая отделка.

一次压制烧成的 Anthologhia 系列的颜色 具有不同色调, 可实现令人愉快的“波浪”效果。系列 备有特殊件和防滑表面处理。

metallica

La linea Metallica in monopressocottura ha come caratteristica la finitura metallizzata della superficie che, unitamente al movimento dato dalle diverse tonalità, permette la realizzazione di campiture in mosaico con particolari effetti di luce e riflessione negli arredi d'interni così come nei rivestimenti di facciate esterne.

The Metallica line in single-press firing has the characteristic metal finish that, with its different shades, allows the realisation of mosaic projects with distinguished light and reflection effects suitable for design of interiors and for covering of exterior facades.

La série metallica en monocuisson sous pression, propose une finition de surface métallique associé avec une combinaison de différentes tonalités de couleurs et de formats. Cette association permet de réaliser des mosaïques avec une profondeur et des effets de lumière, aussi bien en intérieur qu'en extérieur.

Die Linie Metallica in Einbrandpressverfahren zeichnet sich durch die metallische Glasur- Vollendung aus, die, gemeinsam mit der lebhaften Oberfläche, durch die verschiedenen Metall- Schattierungen, ästhetische Verkleidungs- Verarbeitungen in innen wie in außen Bereich, mit besonderen Spiegelung Effekte, ermöglicht.

La linea Metallica en monococción por prensado presenta un acabado metalizado de la superficie que, junto al movimiento ofrecido de las diferentes tonalidades, permite de realizar con el mosaico particulares efectos de luz y reflexión al interior así como al exterior, en los revestimientos de fachadas.

Отличительной особенностью серии керамических плиток одноразового обжига под прессом "Металлика" является металлизированная отделка поверхности, что вместе с вариациями цветового тона позволяет выкладывать мозаичные поверхности с особым световым эффектом и отблеском, как для отделки интерьеров, так и для облицовки внешних фасадов.

一次压制烧成的 Metallica 系列 的特点是表面具有金属处理效果, 连同不同色调产生的动感, 令铺设马赛克的表面 具有特殊的光泽, 并对室内家具以及 室外正面的面砖 产生反光效果。

diva



seta



open space



anthologhia



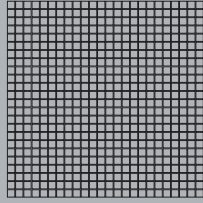
oro, platino, metallica



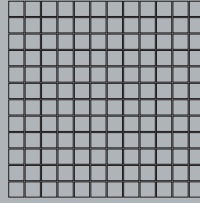


MIX

mix neutral



1,2 x 1,2 cm - 1/2" x 1/2"



2,5 x 2,5 cm - 1" x 1"

modulo/module/module/Modul/módulo/модуль/拼图组合
30 x 30 cm / 12" x 12"



URBAN HI-TECH (01)

MTL 09 - 15%		
OPS 02 - 35%		
SET 03 - 25%		
OPS 04 - 25%		



URBAN HI-TECH (02)

MOS 04 - 35%		
MOS 09 - 25%		
OPS 03 - 40%		



URBAN HI-TECH (03)

SET 04 - 22%		
OPS 02 - 22%		
SET 01 - 23%		
MTL 06 - 10%		
MOS 13 - 23%		



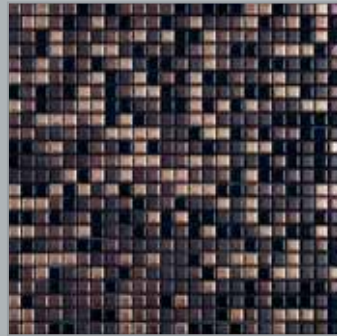
METROPOLITAN BUMP (03)

MTL 06 - 20%		
SET 01 - 30%		
MOS 04 - 20%		
MOS 09 - 30%		



COLONIALE (02)

MTL 04 - 50%		
MOS 27 - 50%		



TRIBAL CHIC (03)

MOS 10 - 25%		
MTL 04 - 25%		
OPS 04 - 25%		
MTL 07 - 25%		



ARCHITECTURE METAL (06)

MTL 07 - 50%		
MTL 04 - 50%		



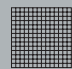
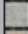




ARCHITECTURE METAL (01)

MTL 09 - 20%		
MTL 08 - 30%		
MTL 07 - 20%		
MTL 06 - 10%		
MTL 05 - 10%		
MTL 04 - 10%		

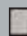

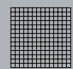
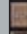
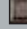


METROPOLITAN BUMP (06)

 OPS 06 - 25%		
 SET 02 - 25%		
 MOS 27 - 25%	XMBM 406	XMBM 706
 OPS 05 - 25%		

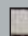

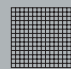
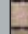




COLONIALE (01)

 MOS 25 - 34%		
 MOS 27 - 33%		
 MTL 04 - 33%	XCOL 401	XCOL 701



METROPOLITAN BUMP (05)

 MOS 25 - 25%		
 OPS 07 - 25%		
 MOS 27 - 25%	XMBM 405	XMBM 705
 SET 05 - 25%		

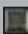

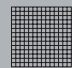
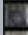
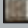


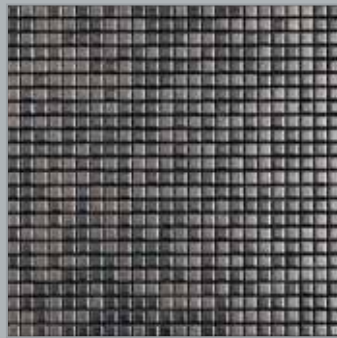
POETIC (02)

 OPS 07 - 33%		
 MOS 27 - 33%		
 MTL 04 - 34%	XPOE 402	XPOE 702



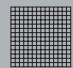
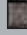


ARCHITECTURE METAL (02)

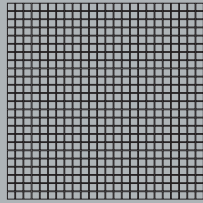
 MTL 06 - 33%		
 MTL 09 - 33%		
 MTL 05 - 34%	XMTL 402	XMTL 702



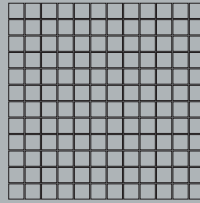
ARCHITECTURE METAL (05)

 MTL 06 - 50%		
 MTL 05 - 5%		
	XMTL 405	XMTL 705

mix color



1,2 x 1,2 cm - 1/2" x 1/2"

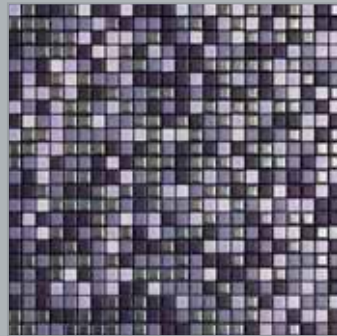
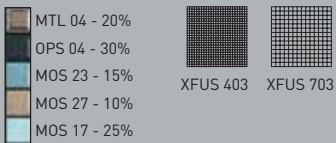


2,5 x 2,5 cm - 1" x 1"

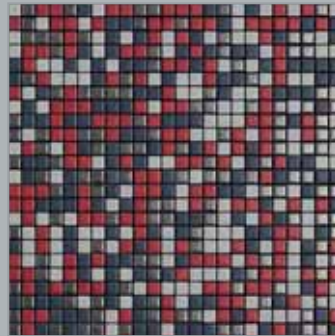
modulo/module/module/Modul/módulo/модуль/拼图组合
30 x 30 cm / 12" x 12"



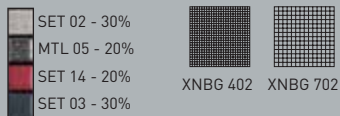
FUSION (03)



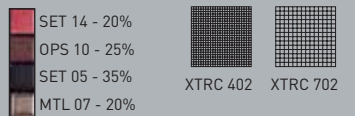
METROPOLITAN BUMP (02)



NEW BEAT GENERATION (02)



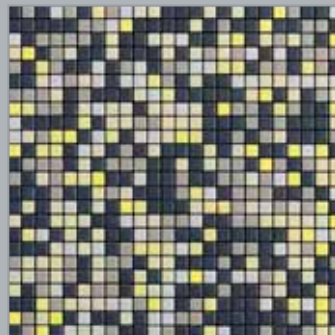
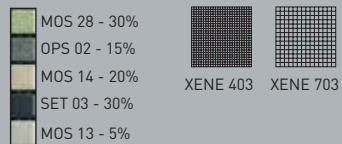
TRIBAL CHIC (02)



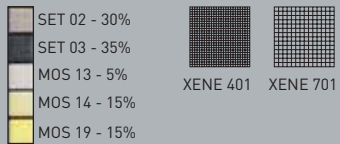
LAGUNA BLU (03)



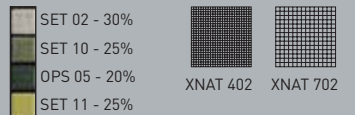
ENERGY (03)



ENERGY (01)



NATURA (02)





POETIC (01)

MOS 27 - 20%	SET 02 - 25%	XPOE 401	XPOE 701
SET 08 - 20%			
MOS 11 - 35%			



NEW BEAT GENERATION (03)

SET 01 - 40%	XNBG 403	XNBG 703
SET 14 - 25%		
OPS 04 - 20%		
MOS 23 - 15%		



NEW BEAT GENERATION (01)

OPS 01 - 25%	XNBG 401	XNBG 701
SET 03 - 25%		
OPS 02 - 25%		
MOS 23 - 25%		



LAGUNA BLU (02)

MOS 33 - 20%	XLAB 402	XLAB 702
MOS 28 - 20%		
MOS 23 - 20%		
MOS 35 - 40%		



NATURA (03)

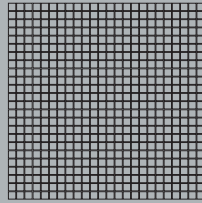
MOS 20 - 25%	XNAT 403	XNAT 703
OPS 09 - 35%		
MOS 27 - 25%		
SET 11 - 15%		



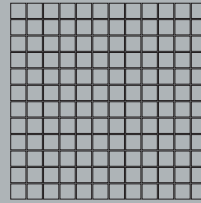
FUSION (01)

MOS 08 - 30%	XFUS 401	XFUS 701
MOS 20 - 25%		
MOS 34 - 25%		
MTL 04 - 20%		

mix wellness&pool

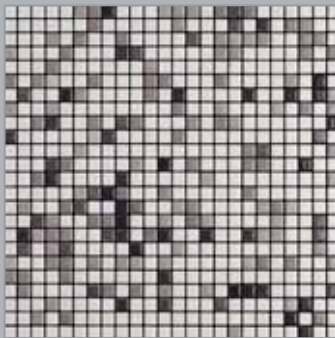


1,2 x 1,2 cm - 1/2" x 1/2"



2,5 x 2,5 cm - 1" x 1"

modulo/module/module/Modul/módulo/модуль/拼图组合
30 x 30 cm / 12" x 12"



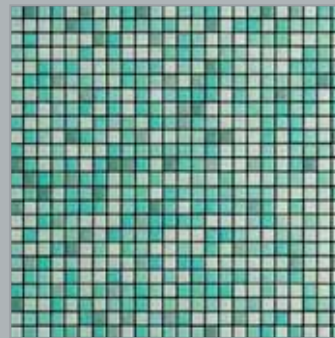
MIX WELLNESS&POOL (13)

MOS 04 - 10%	MOS 09 - 20%	MOS 13 - 70%	XWEL 413	XWEL 713
--------------	--------------	--------------	----------	----------



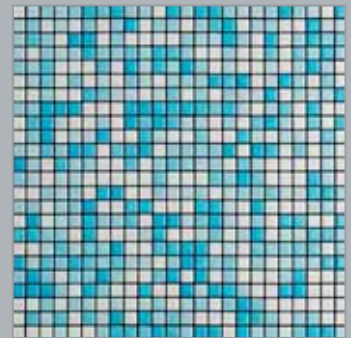
MIX WELLNESS&POOL (12)

MOS 27 - 10%	MOS 07 - 20%	MOS 13 - 70%	XWEL 412	XWEL 712
--------------	--------------	--------------	----------	----------



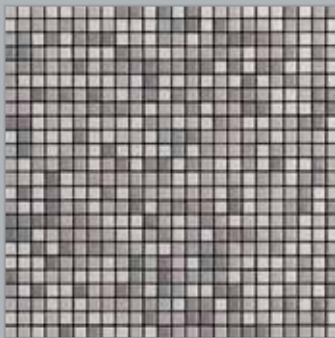
MIX WELLNESS&POOL (06)

MOS 22 - 40%	MOS 21 - 40%	MOS 16 - 10%	MOS 15 - 10%	XWEL 406	XWEL 706
--------------	--------------	--------------	--------------	----------	----------



MIX WELLNESS&POOL (14)

MOS 18 - 33%	MOS 17 - 33%	MOS 13 - 34%	XWEL 414	XWEL 714
--------------	--------------	--------------	----------	----------



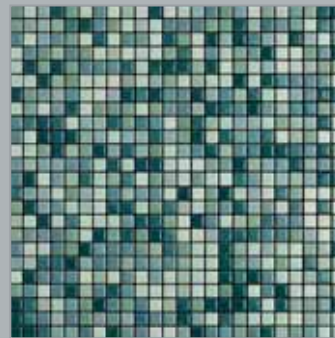
MIX WELLNESS&POOL (17)

MOS 09 - 33%	MOS 25 - 33%	MOS 13 - 34%	XWEL 417	XWEL 717
--------------	--------------	--------------	----------	----------



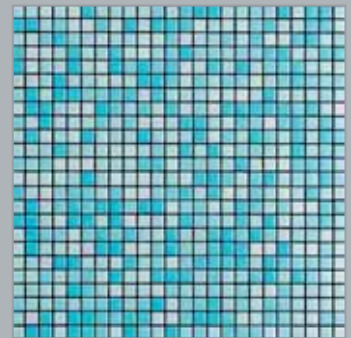
MIX WELLNESS&POOL (18)

MOS 25 - 34%	MOS 07 - 33%	MOS 27 - 33%	XWEL 418	XWEL 718
--------------	--------------	--------------	----------	----------



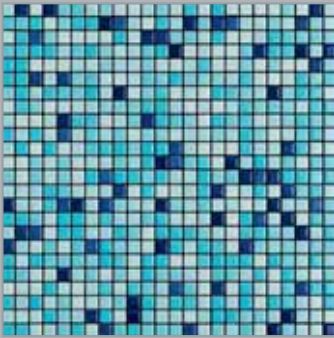
MIX WELLNESS&POOL (11)

MOS 33 - 25%	MOS 15 - 25%	MOS 23 - 25%	MOS 21 - 25%	XWEL 411	XWEL 711
--------------	--------------	--------------	--------------	----------	----------


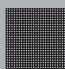





MIX WELLNESS&POOL (15)

MOS 18 - 50%	MOS 17 - 50%	XWEL 415	XWEL 715
--------------	--------------	----------	----------






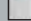


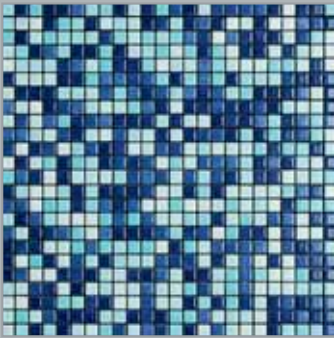
MIX WELLNESS&POOL (04)

 MOS 17 - 40%	 XWEL 404	 XWEL 704
 MOS 18 - 50%		
 MOS 24 - 10%		



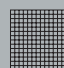

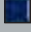


MIX WELLNESS&POOL (03)

 MOS 18 - 20%	 XWEL 403	 XWEL 703
 MOS 30 - 20%		
 MOS 17 - 40%		
 MOS 13 - 20%		

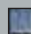


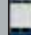




MIX WELLNESS&POOL (16)

 MOS 17 - 25%	 XWEL 416	 XWEL 716
 MOS 18 - 25%		
 MOS 24 - 50%		

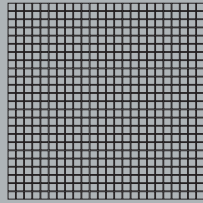


MIX WELLNESS&POOL (08)

 MOS 11 - 10%	 XWEL 408	 XWEL 708
 MOS 13 - 20%		
 MOS 24 - 50%		
 MOS 09 - 20%		

TEXTURE

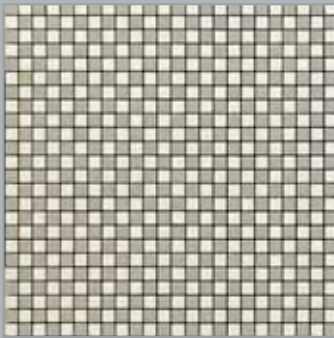
dama



1,2 x 1,2 cm - 1/2" x 1/2"

(A)

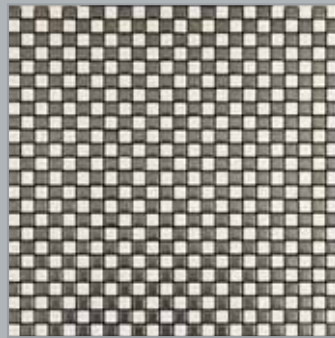
modulo/module/module/Modul/módulo/модуль/拼图组合
30 x 30 cm / 12" x 12"



DAMA (01)



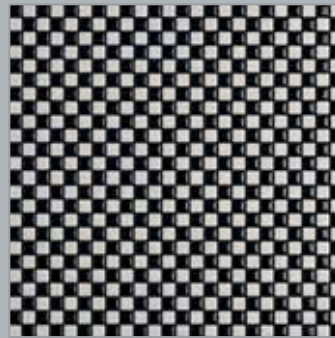
DAMA001



DAMA (02)



DAMA002



DAMA (03)



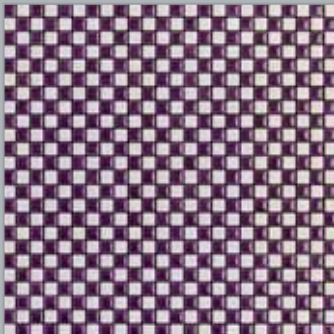
DAMA003



DAMA (04)



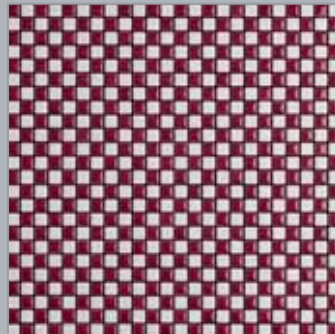
DAMA004



DAMA (05)



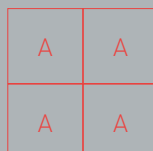
DAMA005



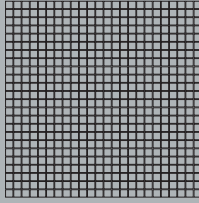
DAMA (06)



DAMA006



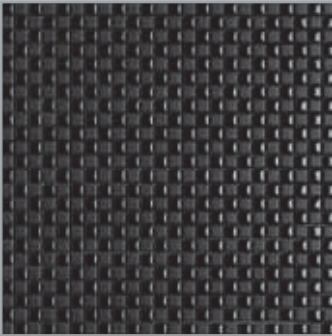
duetto



1,2 x 1,2 cm - 1/2" x 1/2"

(A)

modulo/module/module/Modul/módulo/модуль/拼图组合
30 x 30 cm / 12" x 12"

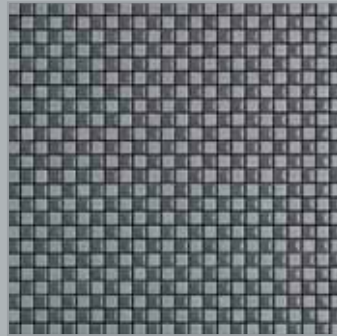


DUETTO (01)

SET 04
DIVA 04



DUETTO01

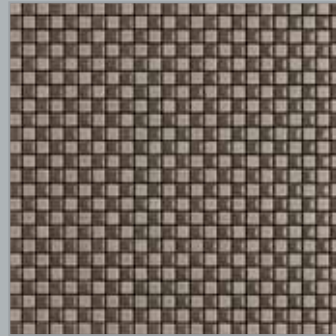


DUETTO (02)

SET 20
DIVA 03



DUETTO02

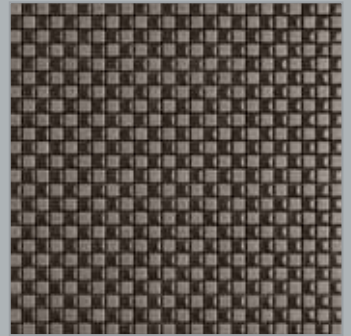


DUETTO (03)

SET 22
DIVA 10



DUETTO03

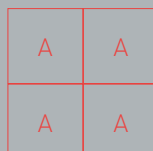


DUETTO (04)

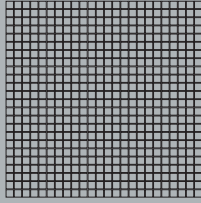
SET 23
DIVA 11



DUETTO04



trio



1,2 x 1,2 cm - 1/2" x 1/2"

(A)

modulo/module/module/Modul/módulo/модуль/拼图组合
30 x 30 cm / 12" x 12"



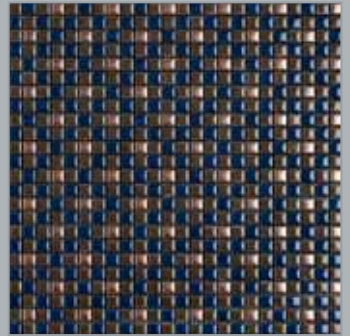
TRIO (01)



TRIO (02)



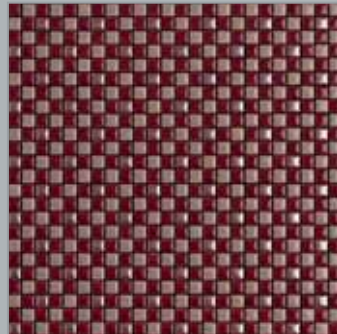
TRIO (04)



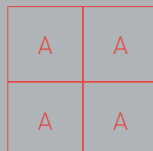
TRIO (05)



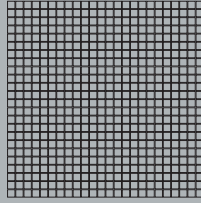
TRIO (06)



TRIO (03)



diago



1,2 x 1,2 cm - 1/2" x 1/2"

(A)

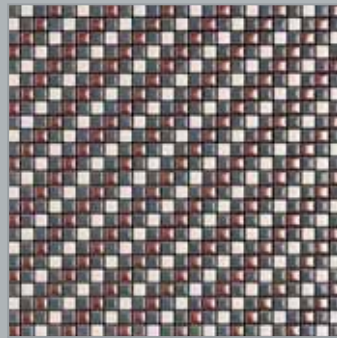
modulo/module/module/Modul/módulo/модуль/拼图组合
30 x 30 cm / 12" x 12"



DIAGO (03)



DIAG003



DIAGO (01)



DIAG001



DIAGO (04)



DIAG004



DIAGO (05)



DIAG005



DIAGO (02)



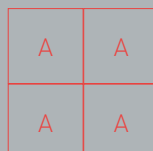
DIAG002



DIAGO (06)



DIAG006



Monopressocottura Appiani
Appiani single press-firing
Monocuisson sous pression Appiani
Appiani Einpressbrandverfahren
Monococción por prensado Appiani
Монопрессообжиг Appiani
Appiani 一次压烧成形

La Monopressocottura consente di ottenere prodotti ceramici dalle caratteristiche pressocchè uniche: smalti e argille, precedentemente atomizzati, vengono uniti per compenetrazione mediante pressatura a secco. Il ciclo di cottura a temperature di oltre 1200 °C pone in risalto le eccezionali qualità estetiche, di durata e di resistenza del prodotto. Queste caratteristiche rendono tali prodotti ideali per molteplici applicazioni, sia in interno che in esterno, sia per pavimenti che per rivestimenti.

L'aspetto: lati perpendicolari e leggera stondatura della superficie smaltata, smalto totalmente coprente, lucido, opaco e naturale.

La manutenzione: lo smalto non trattiene lo sporco, igiene totale, facile pulizia.

Le caratteristiche: elevata resistenza agli urti, alle macchie e alle abrasioni, superfici resistenti agli agenti chimici e alle muffe.

La versatilità: adattabilità ad architetture di qualsiasi forma, cambia l'aspetto colorico a seconda del fugante utilizzato.

L'ambiente: innovazione tecnologica, controllo delle fasi del ciclo produttivo, costante impegno per la tutela dell'ambiente, prodotti Appiani 100% made in Italy.

Single press-firing makes it possible to obtain ceramic products that are virtually unique: previously-atomised glazes and clays are combined by permeation through dry pressing. The firing cycle at a temperature of over 1200°C enhances the exceptional aesthetic qualities, long life and resistance of the product. These characteristics make the products ideal for a wide range of different applications, both indoors and outdoors, and for both floors and wall tiling.

Appearance: perpendicular sides and slightly rounded glazed surface, glossy, matt and natural.

Maintenance: glaze does not retain dirt, total hygiene, easy to clean.

Features: highly resistant to knocks, stains and abrasion, surfaces resistant to chemical agents and moulds.

Versatility: adaptable to any type of architecture, changes the appearance of the colour depending on the grouting.

The environment: technological innovation, control of the production cycle steps, ongoing commitment to environmental protection, Appiani products 100% made in Italy.

La monocuisson sous pression permet d'obtenir des produits céramiques dont les caractéristiques sont pratiquement uniques: des émaux et des argiles précédemment atomisés s'interpénètrent par pressage à sec. Grâce à un cycle de cuisson à des températures de plus de 1200°C, les qualités exceptionnelles du produit en matière d'esthétique, de durabilité et de résistance sont rehaussées. C'est pourquoi ces produits sont particulièrement adaptés à de multiples applications, aussi bien à l'intérieur qu'à l'extérieur, qu'il s'agisse de réaliser un sol ou un revêtement mural.

L'aspect : côtés perpendiculaires et arrondi léger de la surface émaillée, émail totalement couvrant, brillant, mat et brut.

L'entretien : l'émail ne retient pas les saletés, hygiène totale, excellente nettoyabilité.

Les caractéristiques : résistance élevée aux chocs, aux taches et aux abrasions, surfaces résistant aux agents chimiques et aux moisissures.

L'éclectisme : prodigieuse capacité d'adaptation aux différents modules d'architecture. C'est un produit qui change de couleur en fonction du coulis de jointoiment utilisé.

L'environnement : innovation technologique, contrôle du cycle de production à toutes les étapes, engagement permanent dans la protection de l'environnement, produits Appiani 100 % made in Italy.

Das spezielle Einbrandpressverfahren verleiht keramischen Produkten fast einzigartige Eigenschaften: Glasur und Ton werden nach einer vorherigen Sprühtrocknung vermischt und durchdringen sich bei der Trockenpressung gegenseitig. Der Brennzyklus mit Temperaturen von über 1200°C ermöglicht die außergewöhnlichen ästhetischen Eigenschaften, die Haltbarkeit und Lebensdauer des Produkts. Diese Eigenschaften machen diese Produkte ideal für vielfältige Anwendungen, sowohl in Innen- als auch in Außenbereichen, sowohl für Bodenbeläge als auch für Wandverkleidungen.

Das Aussehen: Senkrechte Seiten und leichte Abrundung der glasierten Oberfläche, komplett deckende Glasur, glänzend, matt und naturbelassen.

Die Wartung: Der Schmutz bleibt nicht an der Glasur haften, hundertprozentige Hygiene, einfache Reinigung.

Die Merkmale: Hohe Stoß-, Flecken- und Abriebfestigkeit, chemisch beständige und schimmelfeste Oberflächen.

Die Vielseitigkeit: Anpassung an jede architektonische Form, die farbliche Optik ändert sich je nach dem verwendeten Verfugungsstoff.

Die Umwelt: Technologische Innovation, Kontrolle der einzelnen Phasen des Produktionszyklus, ständiger Einsatz für den Umweltschutz, zu 100% in Italien hergestellte Appiani-Produkte.

La Monococción por prensado permite obtener productos cerámicos con características únicas: los esmaltes y arcillas, atomizados precedentemente, son unidos por compenetración mediante prensado en seco. El ciclo de cocción a una temperatura superior a 1200 °C resalta las excepcionales cualidades estéticas, de duración y de resistencia del producto. Por tales características, estos productos son ideales para múltiples aplicaciones, tanto en interiores como en exteriores, para pavimentos y para revestimientos de pared.

El aspecto: lados perpendiculares y superficie esmaltada ligeramente redondeada, esmalte totalmente cubriente, brillante, mate y natural.

El mantenimiento: el esmalte no retiene la suciedad, higiene total, limpieza fácil.

Las características: elevada resistencia a golpes, manchas y abrasiones, superficies resistentes a los agentes químicos y al moho.

La versatilidad: adaptable a todo tipo de construcción, cambia el aspecto cromático según el material de rejuntado utilizado.

El medio ambiente: innovación tecnológica, control de las fases del ciclo productivos, empeño constante para la protección del medio ambiente, productos Appiani 100% Italianos.

Технология монопрессобжига позволяет производить керамические изделия с уникальными свойствами: предварительно распыленные глазурь и глина соединяются путем взаимопроникновения в ходе сухого прессования. Цикл обжига при температуре свыше 1200° позволяет достичь исключительной устойчивости, прочности и совершенства внешнего вида изделия. Эти качества делают керамические изделия монопрессобжига идеальными вариантами применения как для укладки внутри помещений, так и снаружи, как для покрытия полов, так и для облицовки стен

Внешний вид: перпендикулярность сторон, легкая сглаженность краев и непрозрачный слой эмали, глянцевого, матового и сатинированного

Уход: эмали не накапливает грязь, тотальная гигиена, легкость в очистке

Характеристики: Удароустойчивая, пятностойкая и устойчивая к появлению царапин плитка, Поверхность, устойчивая к воздействию химических веществ и плесени

Универсальность: Применимость к любой архитектурной форме, меняет цветовой облик в зависимости от используемой затирочной смеси.

Окружающая среда: технологические нововведения, контроль всех стадий производственного цикла, постоянная забота о защите окружающей среды, продукция Appiani 100% made in Italy.

一次压烧成形 (Monopressocottura) 专利技术造就产品的独特品质: 成微粒状的彩釉和陶土, 通过干压互相渗透, 超过摄氏1200的高温烧制极大的提高了产品的美感和耐用性。Appiani马赛克的独特品质使其无论用于室内或室外, 墙壁或地面, 皆为理想之选。

产品外观: 侧面垂直, 釉面略微圆滑, 釉面具有光亮, 哑光和自然表面。

清洁维护: 釉料具有抗污性, 卫生洁净, 易于清洁。

产品特性: 高耐撞击性、抗污性及耐磨性, 表面具有抗化学及霉菌腐蚀性。

产品应用: 适用于各种建筑类型, 根据所使用的水泥浆改变外观颜色。

环境保护: 技术的革新, 生产流程的监控, 环境保护的不懈承诺, Appiani 马赛克100% 意大利制造。

PRODUCT MANAGEMENT:
Arch. Tommaso Gagliardi

ART DIRECTION & GRAPHIC DESIGN:
Christoph Radl, Antonella Provasi

PRESS OFFICE:
Sabrina Giacchetti

PRODUCTS STILL-LIFE
Indoor, Oderzo TV

PHOTO PROCESSING and COLOR SEPARATIONS:
Luce, Udine

PRINT:
Tipolitografia FG

Settembre 2015

APPIANI
31046 Oderzo (TV)
Italia - Via Pordenone 13
Tel. +39.0422 502611
Fax +39.0422 814026
Fax uffici commerciali +39.0422 502622
www.appiani.it
info@appiani.it

Представительство в России
117292 Москва
ул. Дмитрия Ульянова, д.16, к.2, оф. 248
тел. +7 (495) 7249354 - 974 1692
факс +7 (495) 5434261
russia@altaeco.com

www.appiani.it

Appiani is a registered trademark of

altaeco

GRUPPO INDUSTRIALE

Le tonalità dei prodotti fotografati
sono puramente indicative.

The colour shades of the photographed products
are only for reference.

Les tonalités des produits photographiés
sont purement indicatives.

Die Farbtöne der fotografierten Produkte
sind unverbindlich.

Las tonalidades de los productos
son puramente indicativas.

Цвета изделий на фотографии могут
отличаться от реальных цветов.

图片颜色和实物有稍微色。



ALTAECO Gruppo Industriale
è Socio Ordinario del GBC Italia

www.appiani.it

100% MADE IN ITALY

appiani